

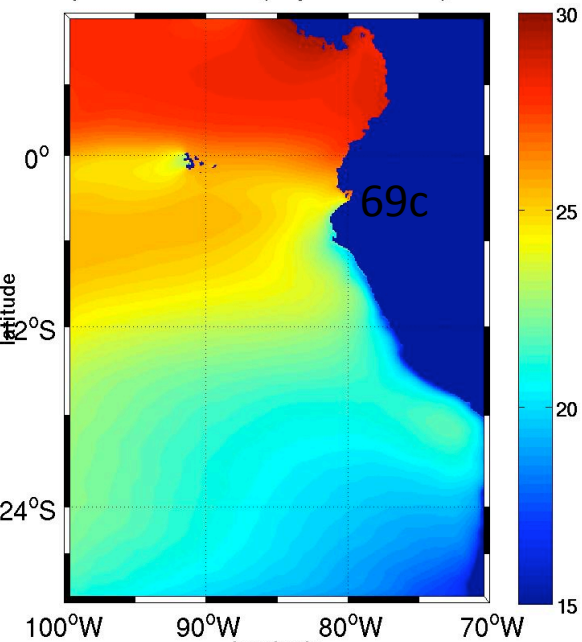
# Runs NEMOS

Erai70c et erai69a

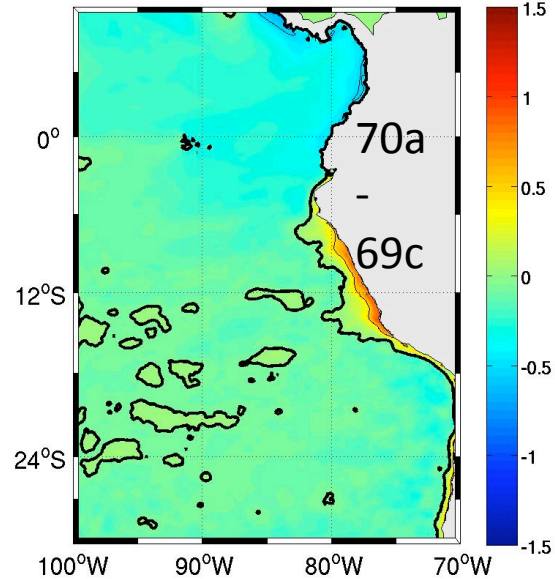
Temperatures

# SST annuelle

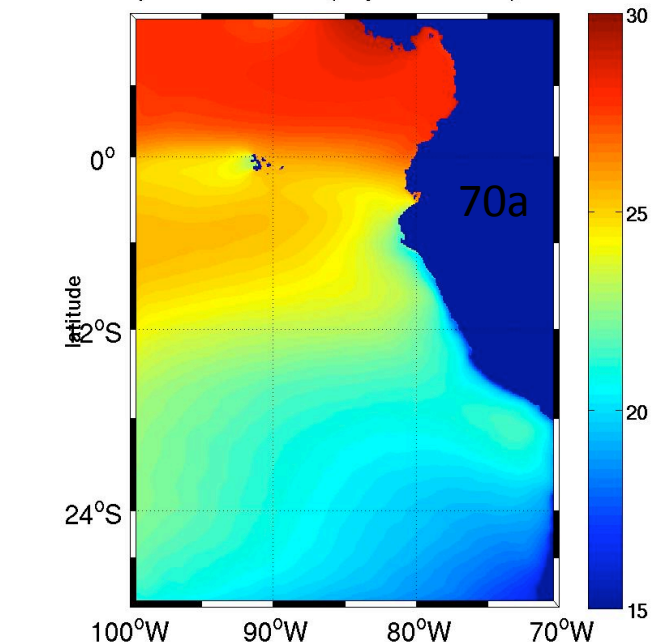
Temperature de surface (moyenne annuelle) eraI69c



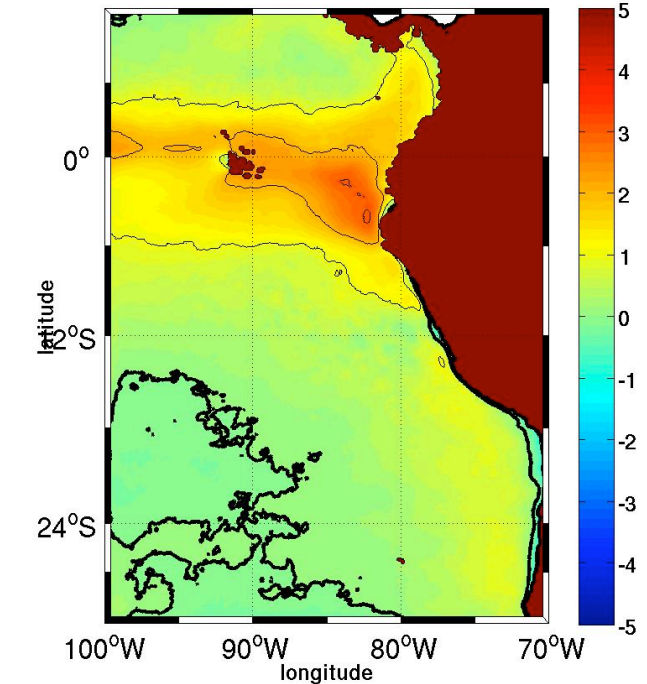
Temperature de surface (moyenne annuelle) eraI70a-eraI69c



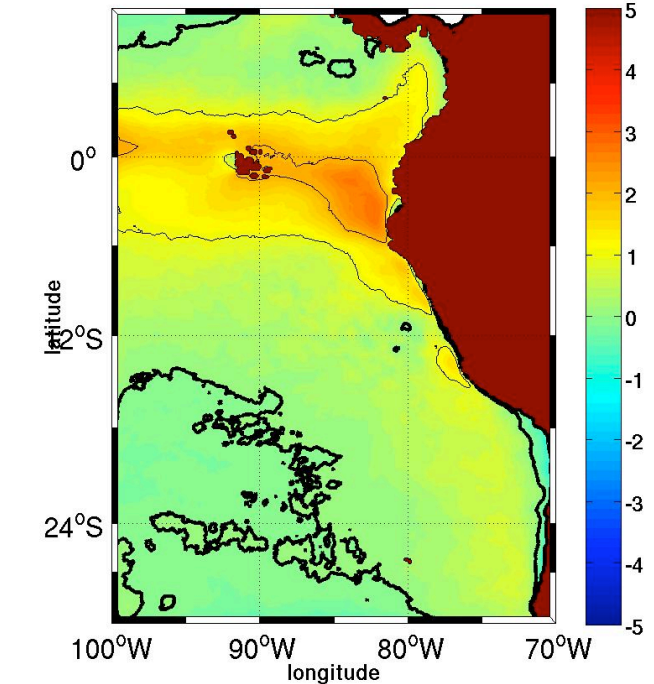
Temperature de surface (moyenne annuelle) eraI70a



Temperature de surface (moyenne annuelle) : eraI69c- Pathfinder

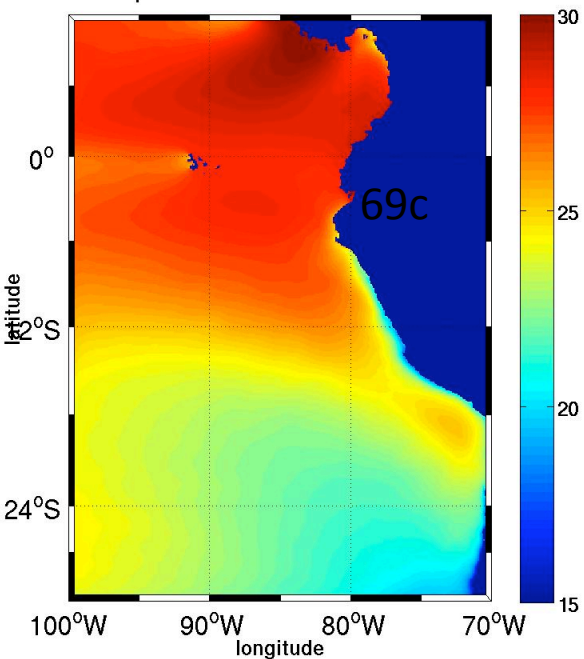


Temperature de surface (moyenne annuelle) : eraI70a- Pathfinder

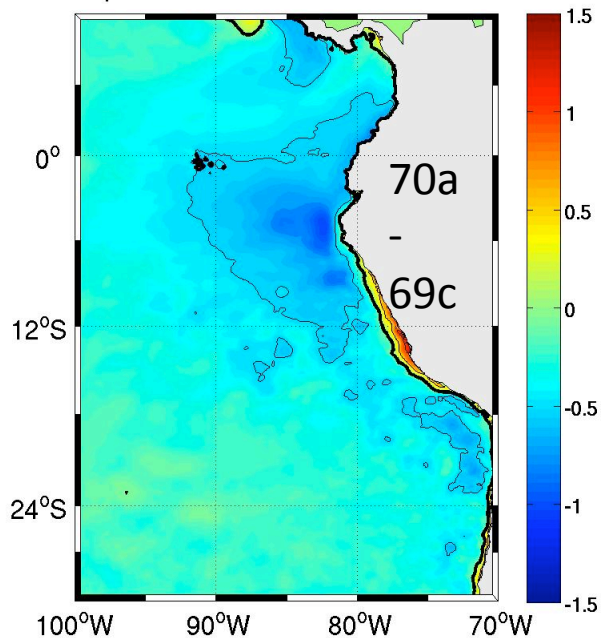


# SST ete

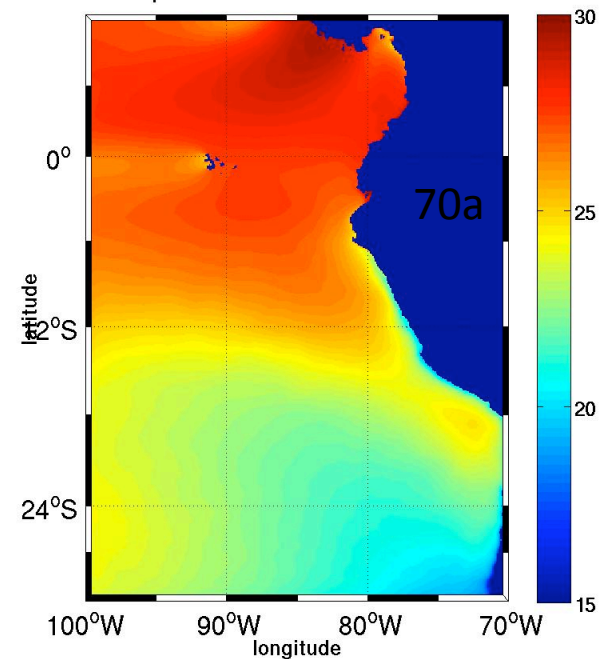
Temperature de surface en ete : eraI69c



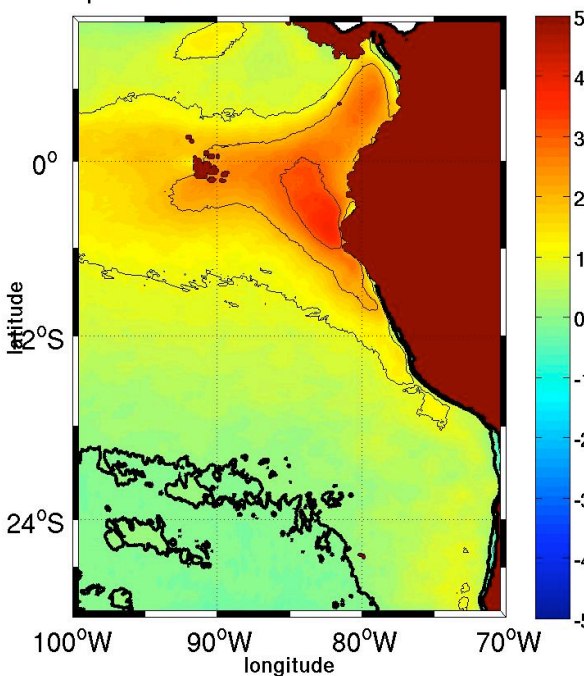
Temperature de surface en ete : eraI70a-eraI69c



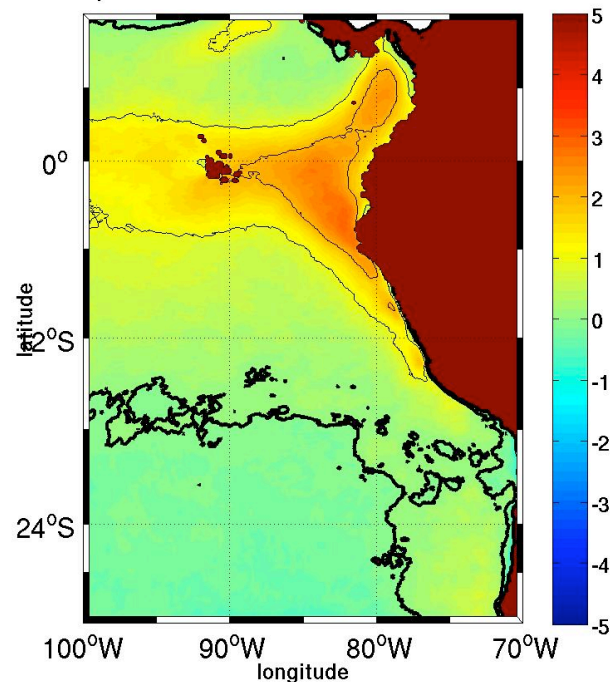
Temperature de surface en ete : eraI70a



Temperature de surface en ete : eraI69c-Pathfinder

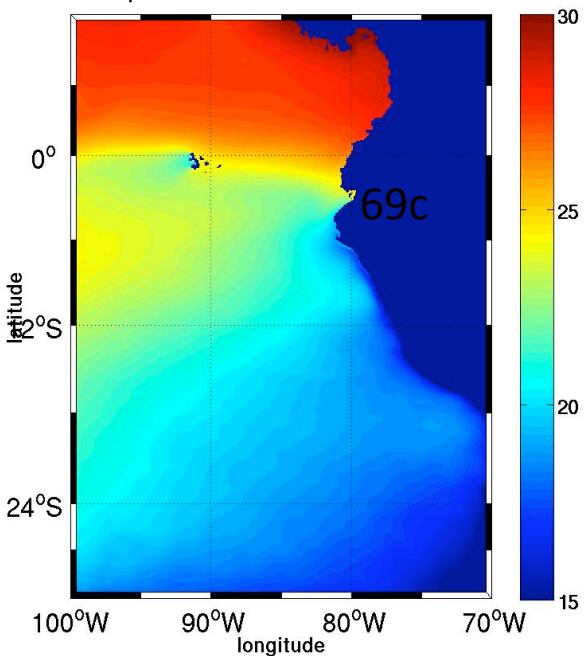


Temperature de surface en ete : eraI70a-Pathfinder

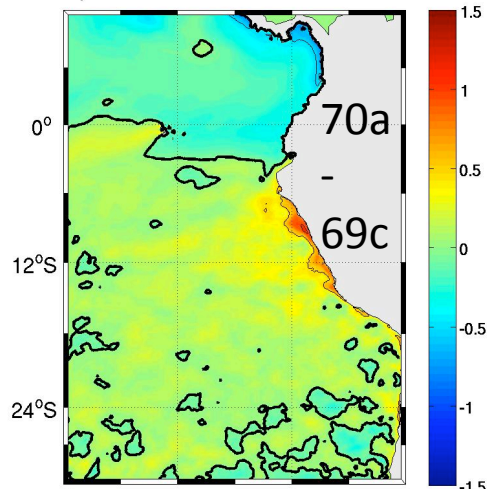


# SST hiver

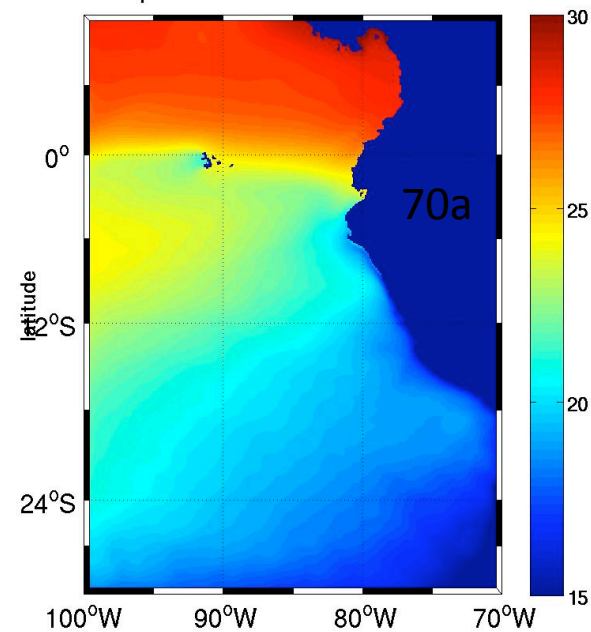
Temperature de surface en hiver : eraI69c



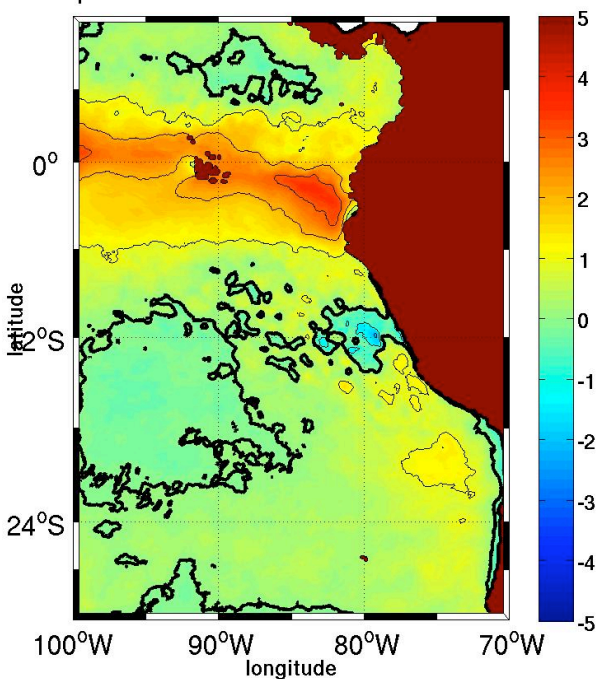
Temperature de surface en hiver : eraI70a-eraI69c



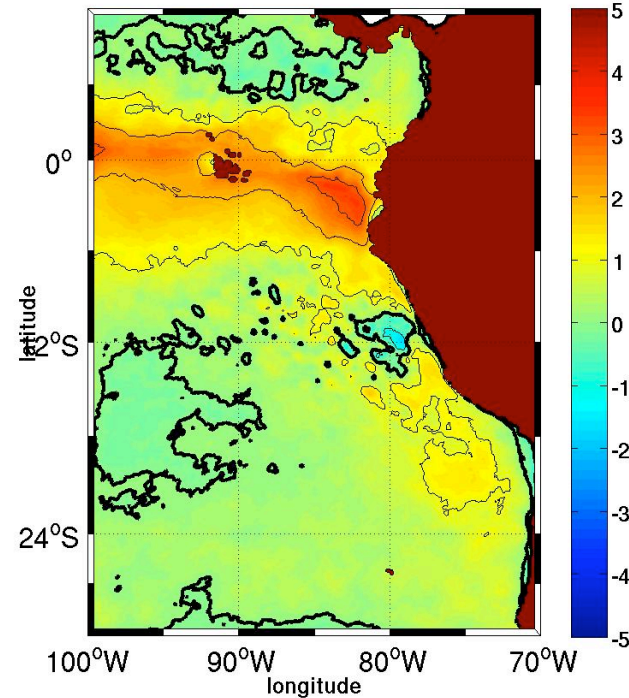
Temperature de surface en hiver : eraI70a

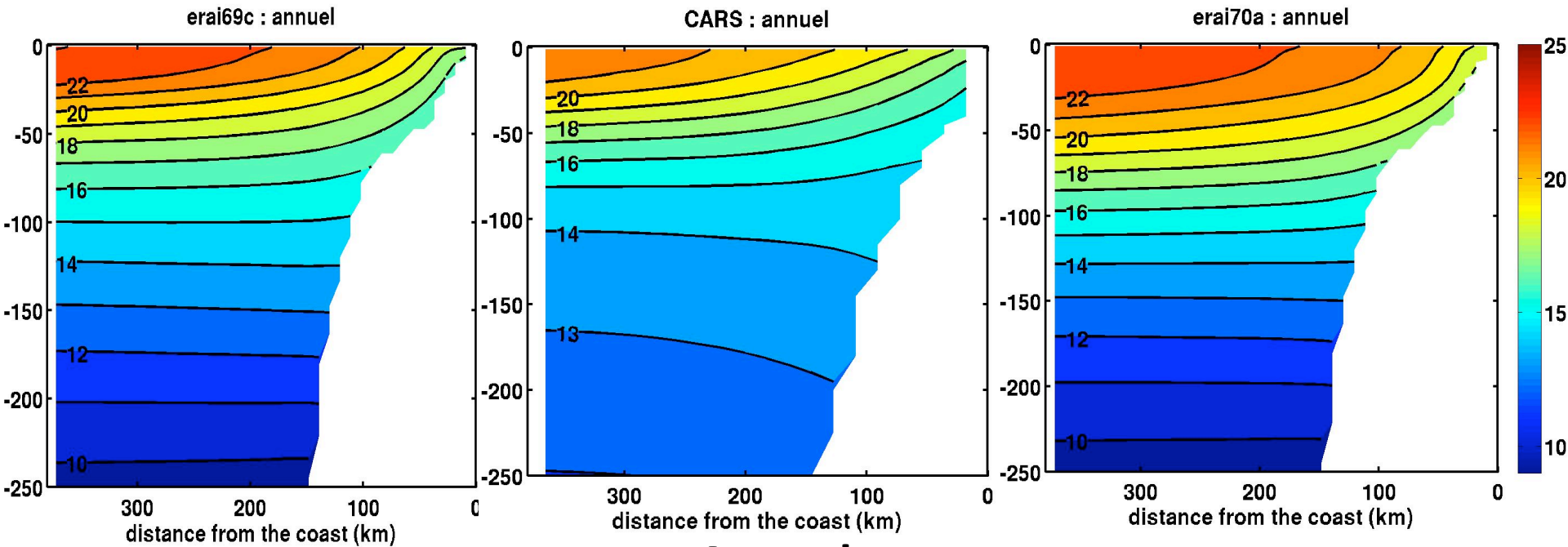


Temperature de surface en hiver : eraI69c-Pathfinder

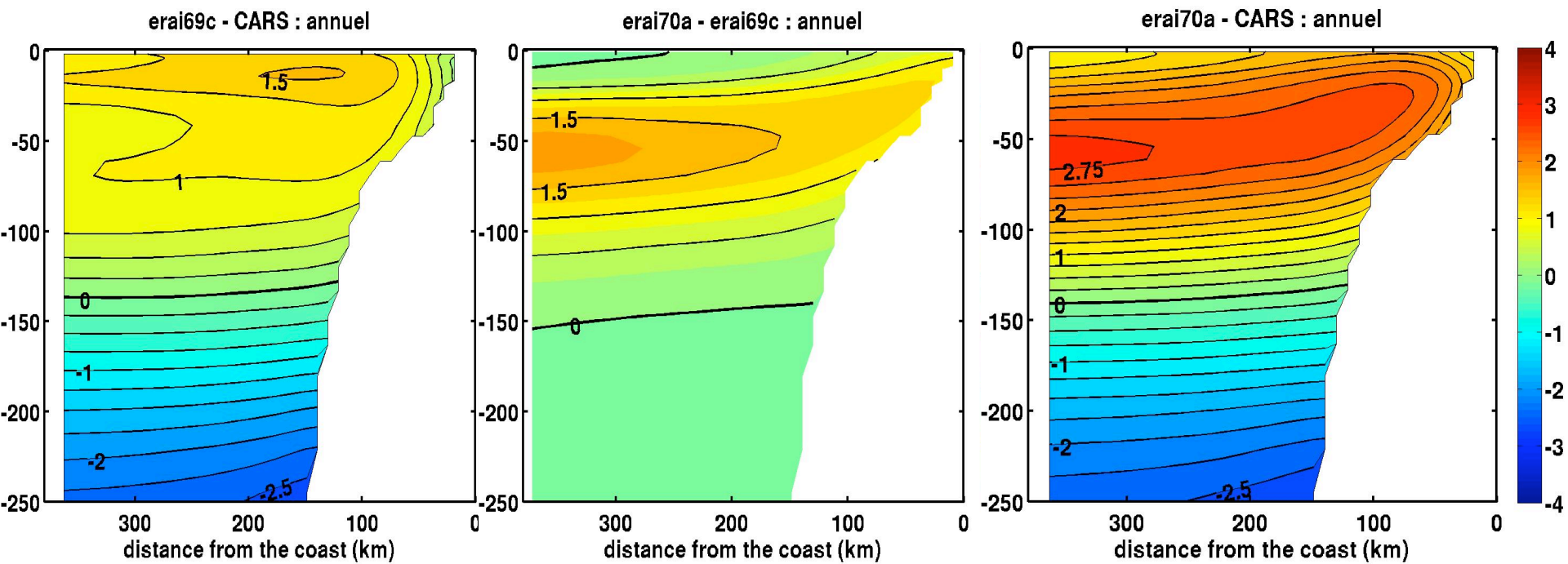


Temperature de surface en hiver : eraI70a-Pathfinder

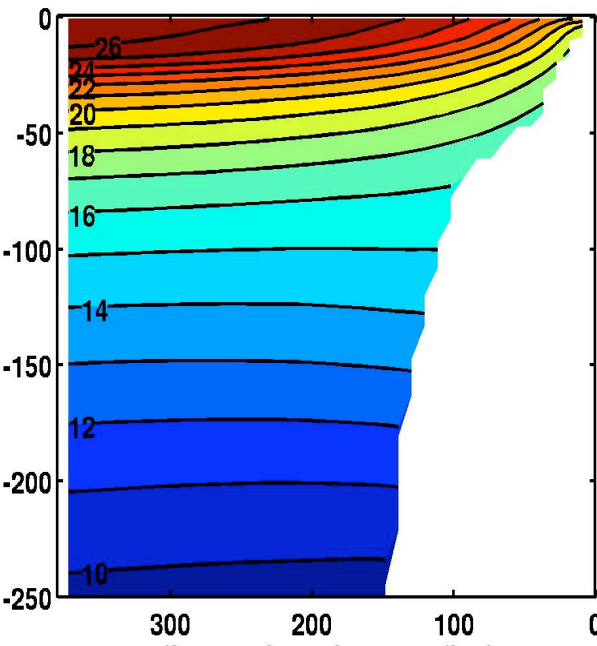




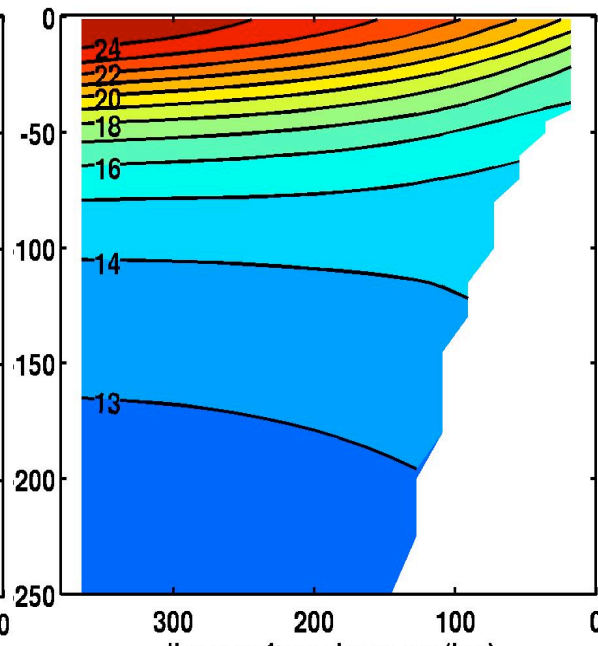
## Annuel



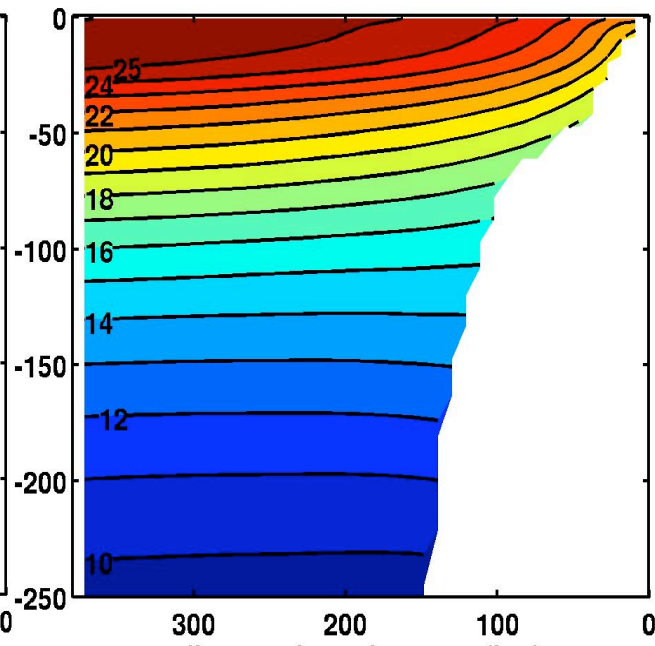
eraI69c : ete



CARS : ete



eraI70a : ete



distance from the coast (km)

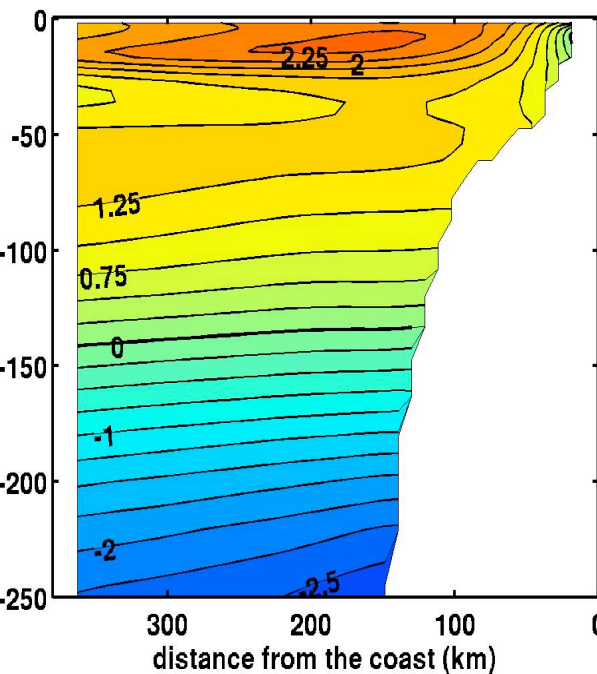
distance from the coast (km)

distance from the coast (km)

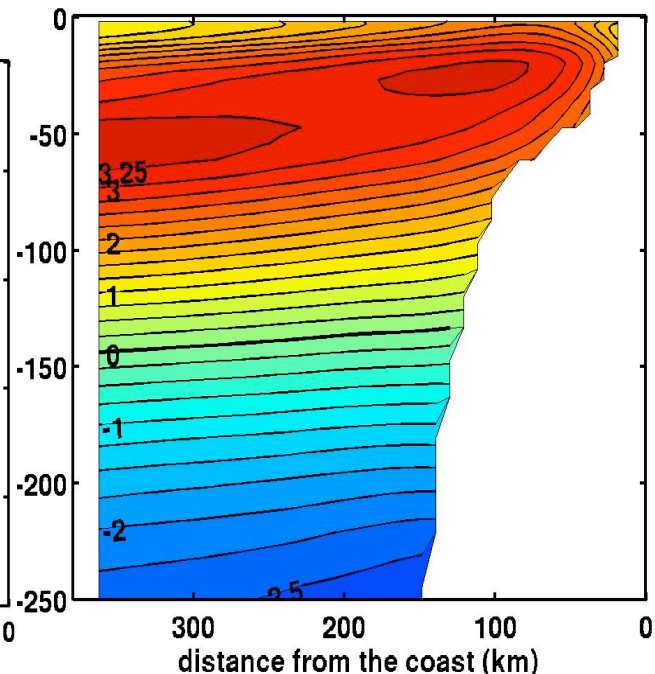
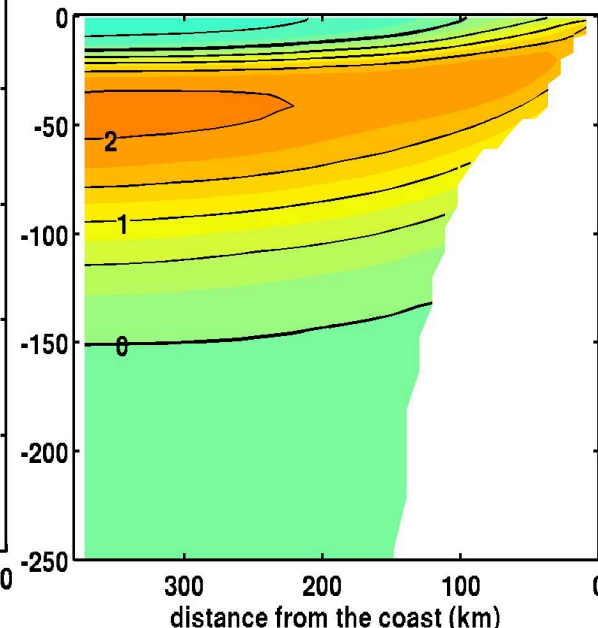
eraI69c - CARS : ete

été

eraI70a - CARS : ete



eraI70a - eraI69c : ete

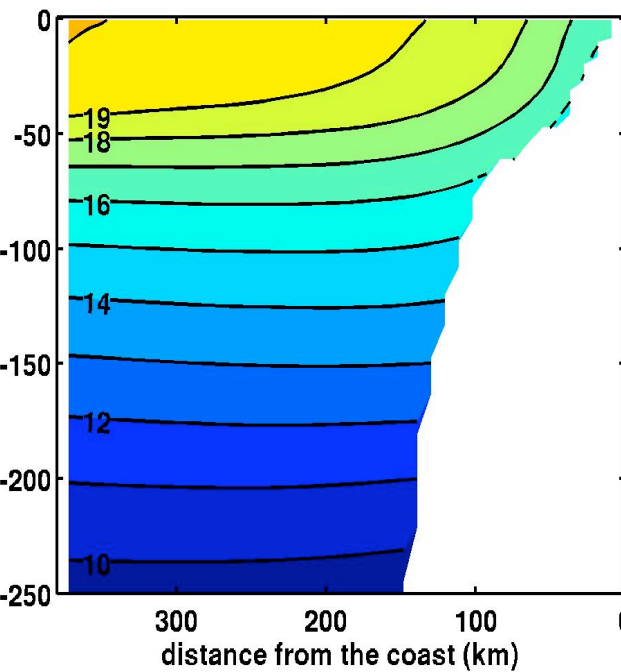


distance from the coast (km)

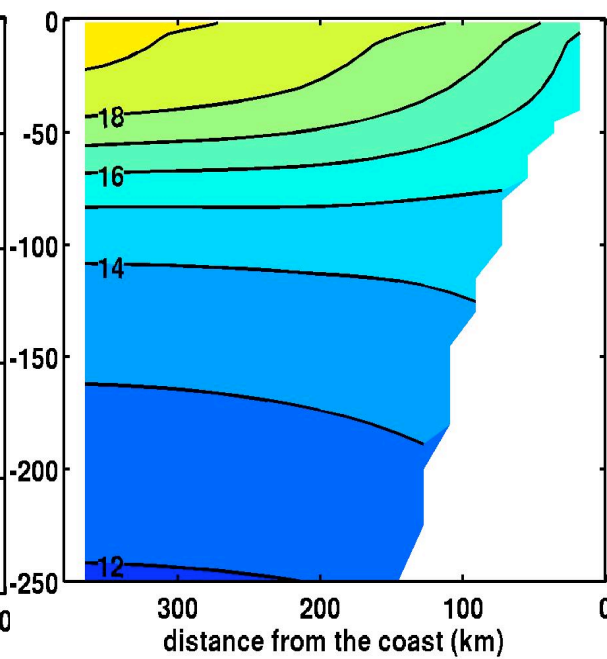
distance from the coast (km)

distance from the coast (km)

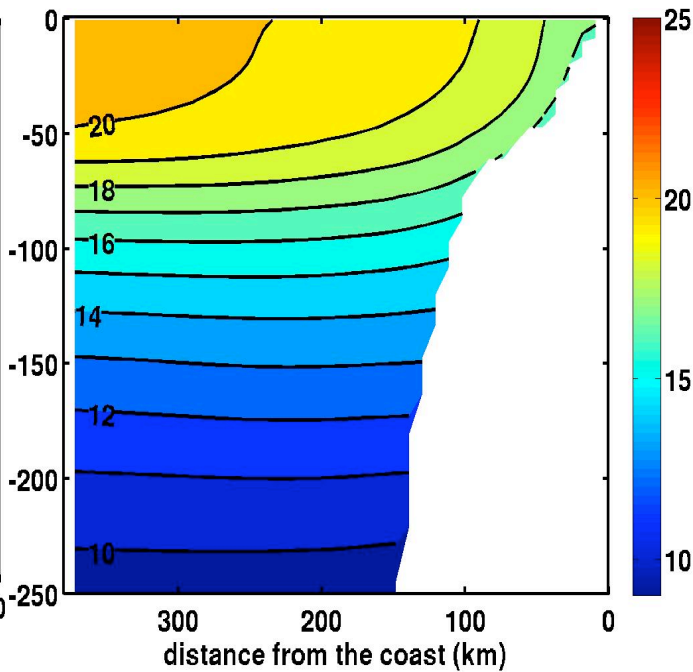
eraI69c : hiver



CARS : hiver

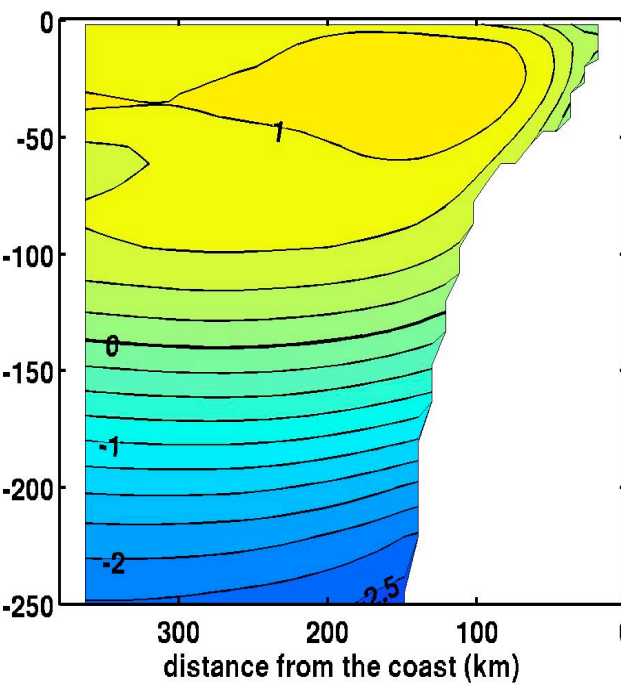


eraI70a : hiver

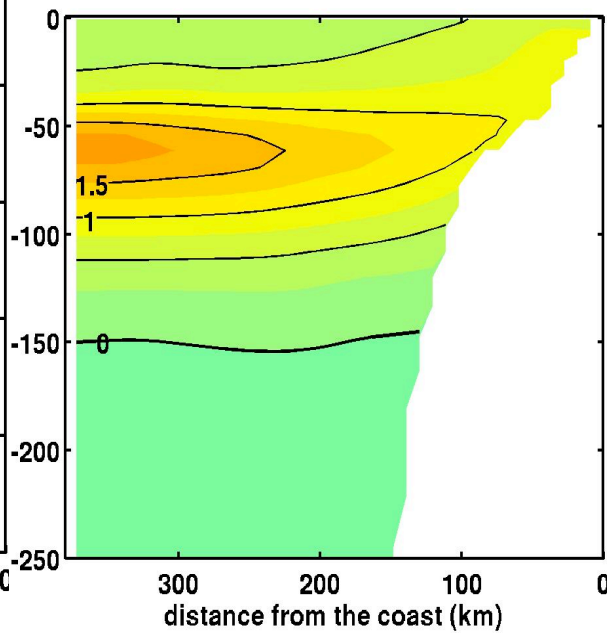


hiver

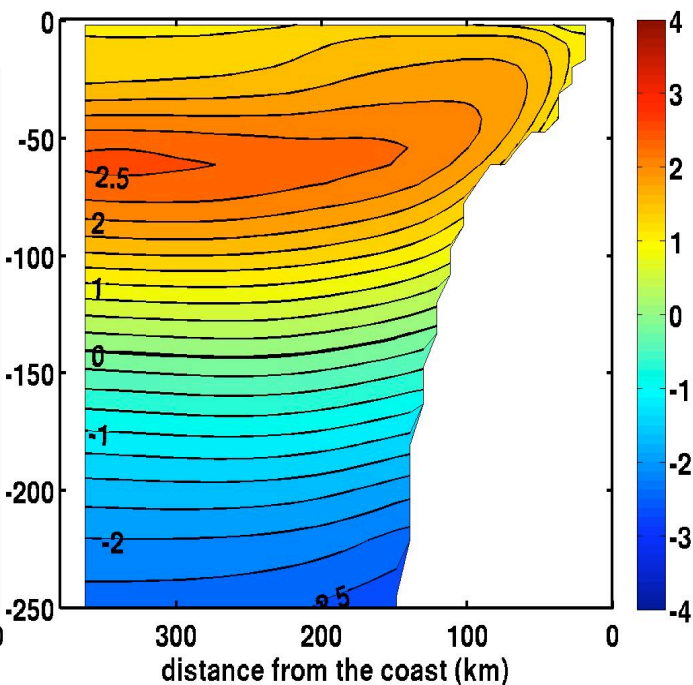
eraI69c - CARS : hiver



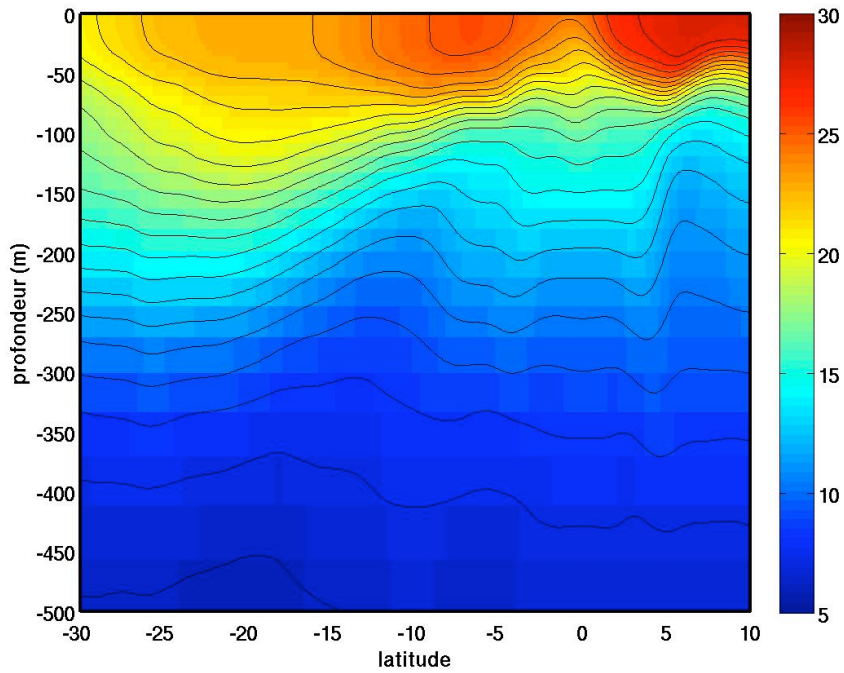
eraI70a - eraI69c : hiver



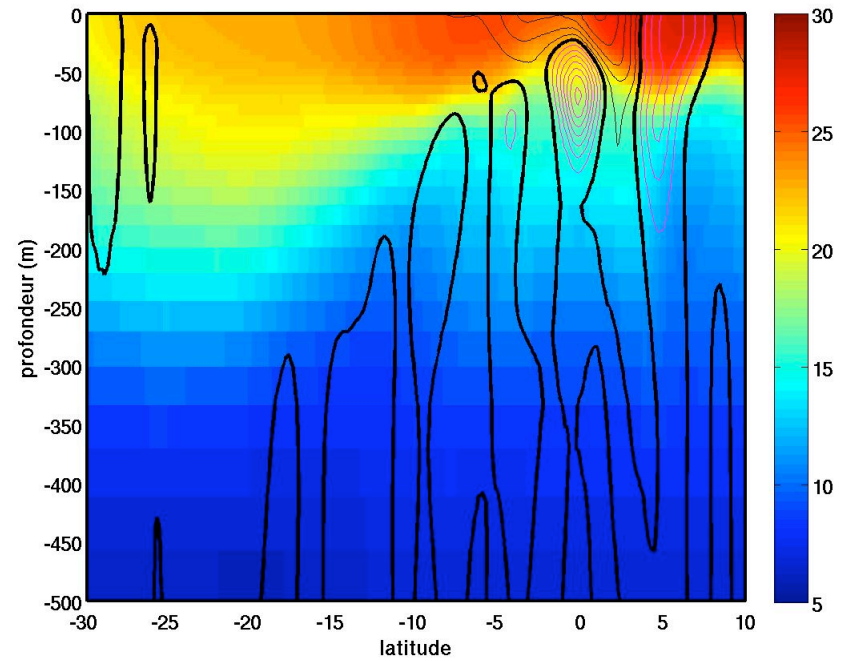
eraI70a - CARS : hiver



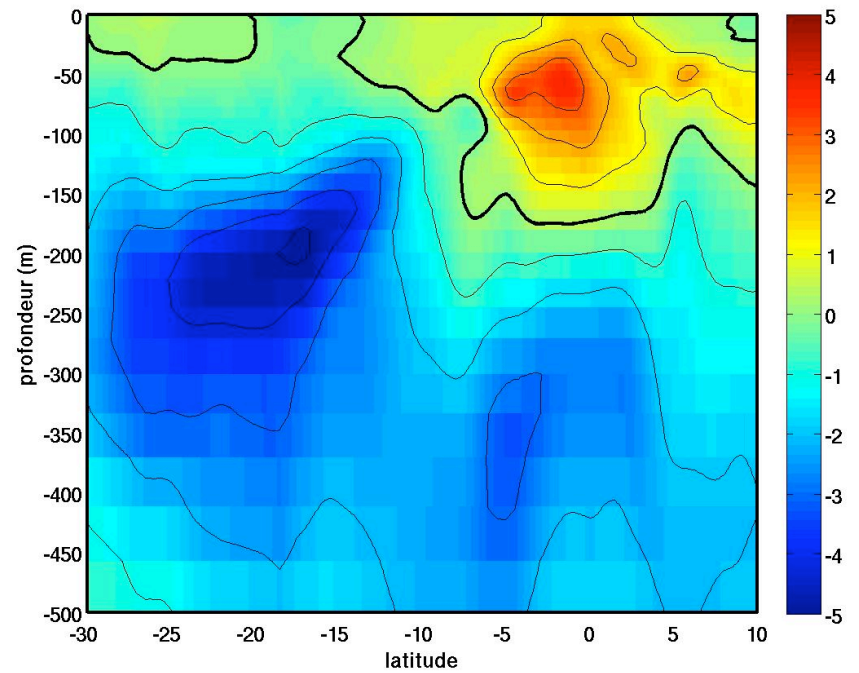
frontiere ouest :



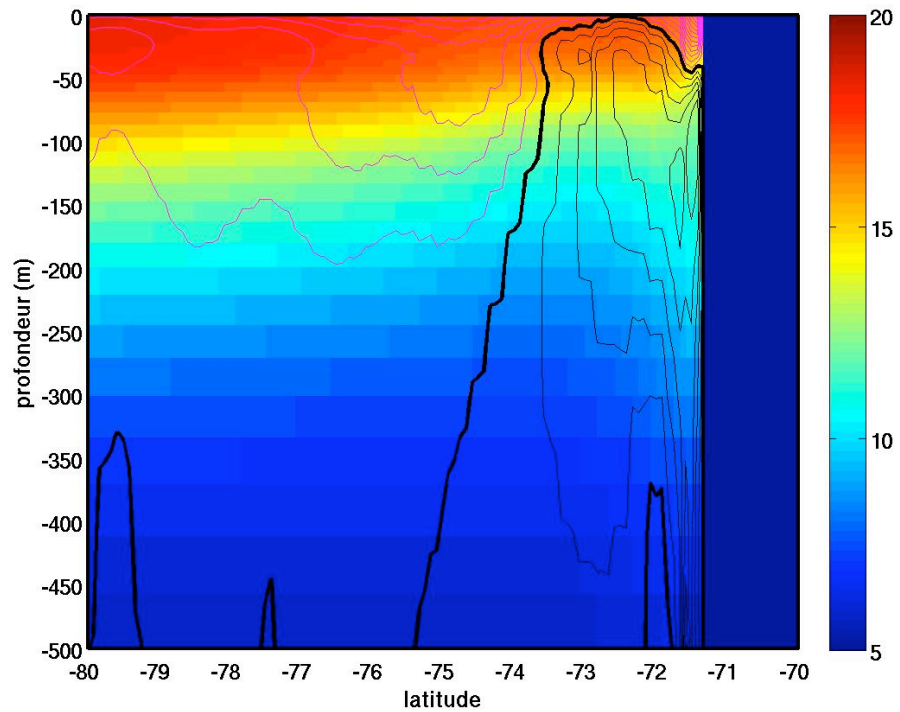
frontiere ouest : erai69c



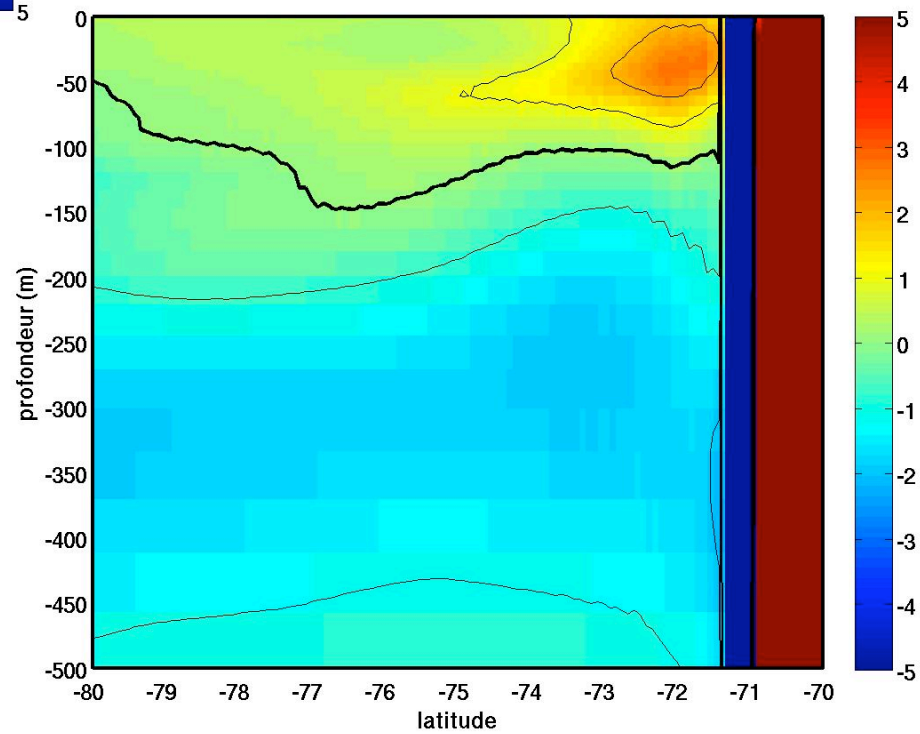
frontiere ouest : obc-CARS



frontiere sud : erai69c

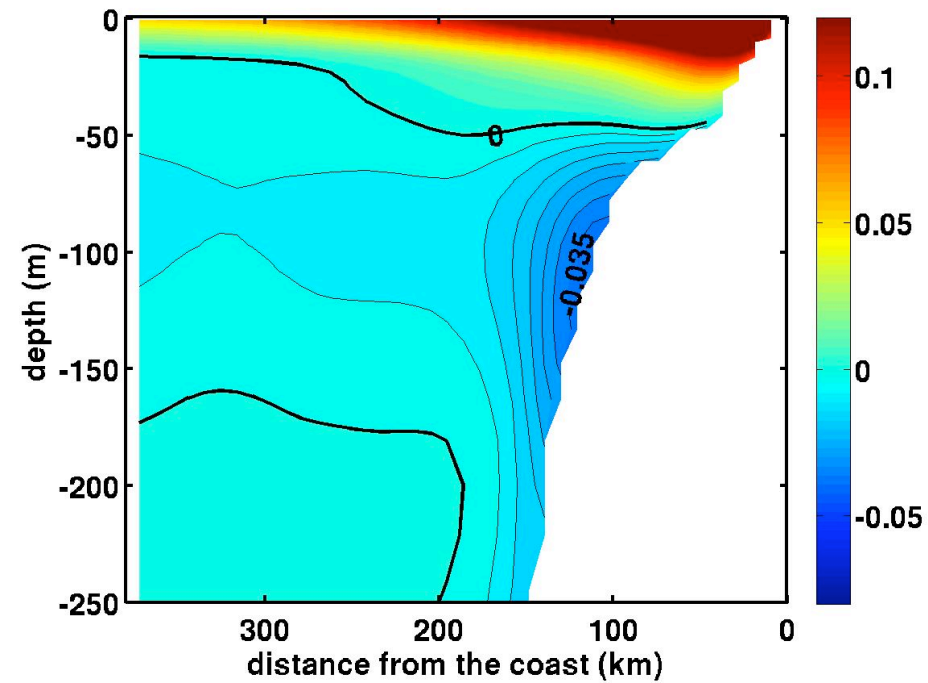


frontiere sud : erai69c-CARS

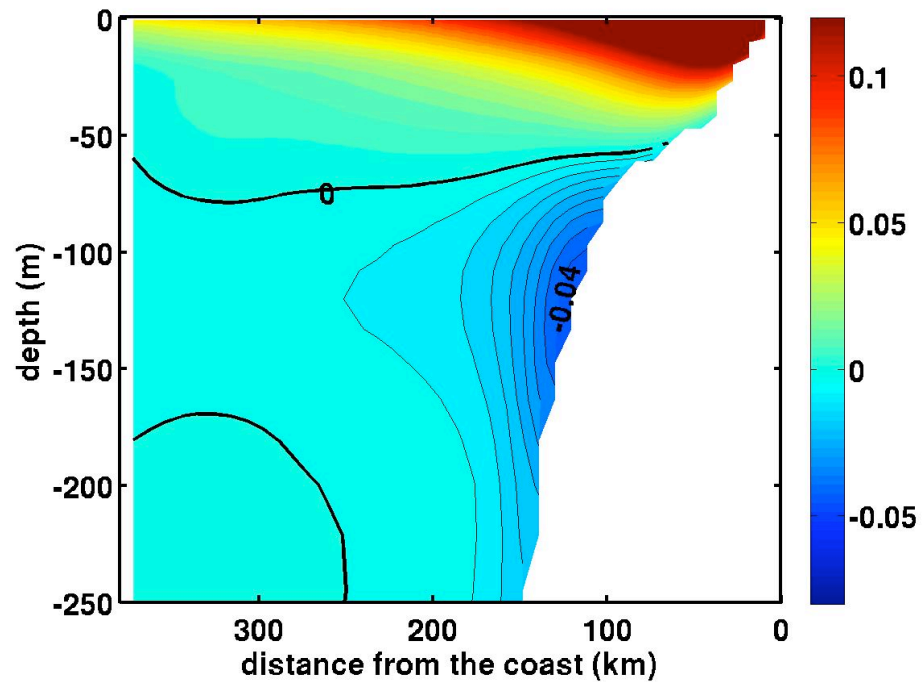


Courants alongshore

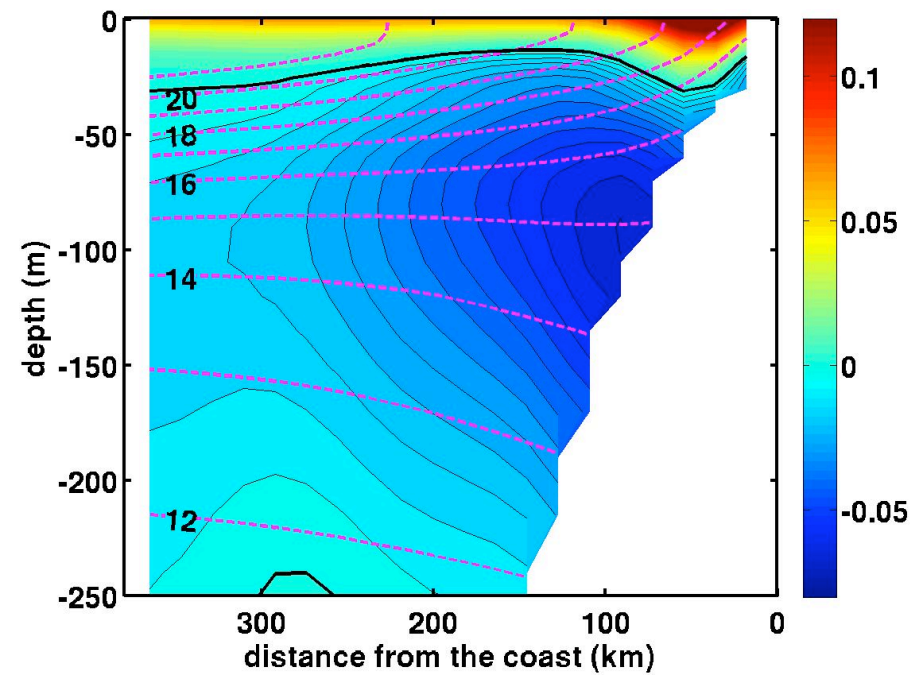
era169c : annuel



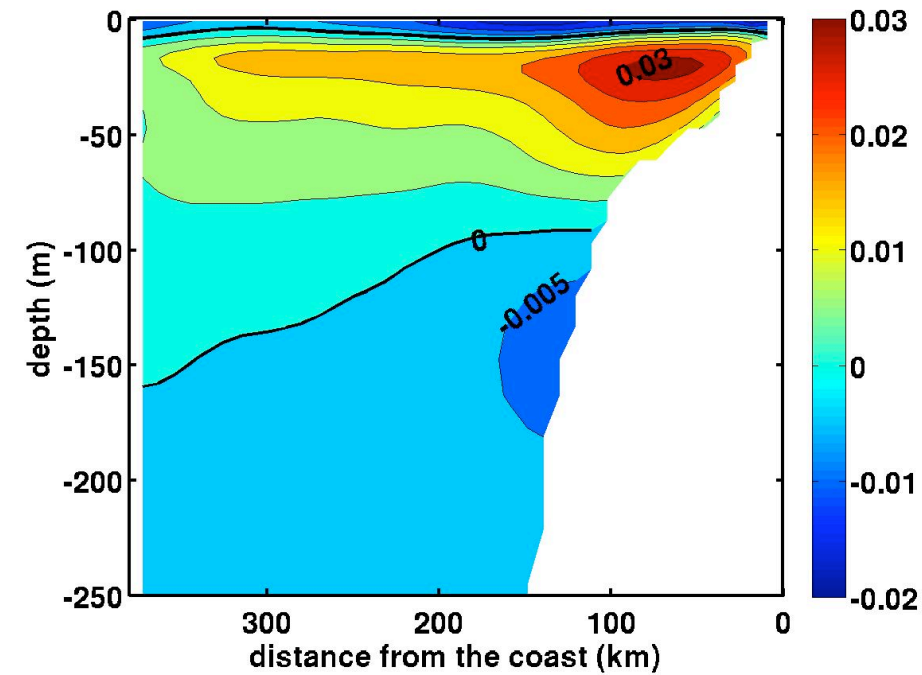
era170a : annuel



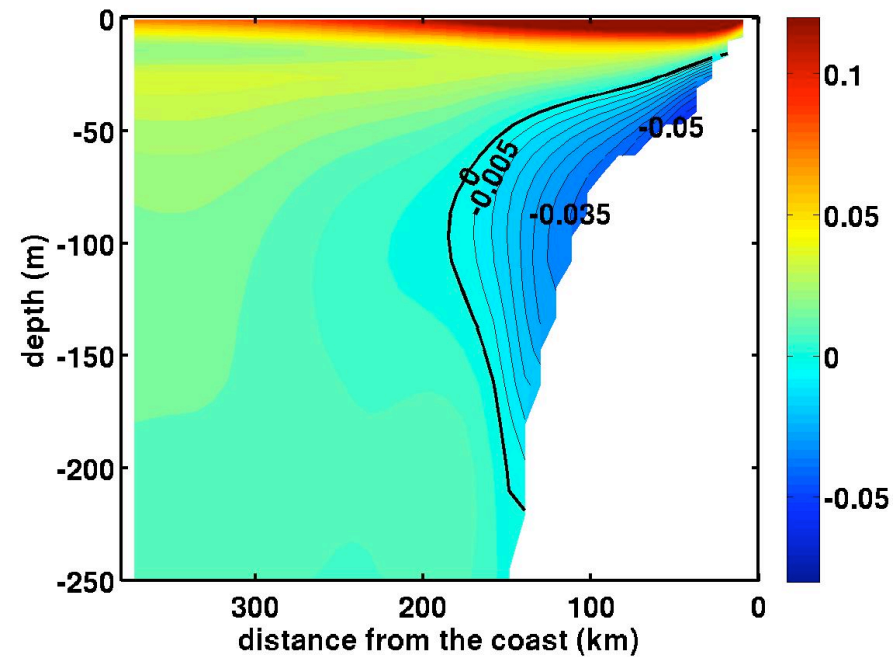
CR-SCOW



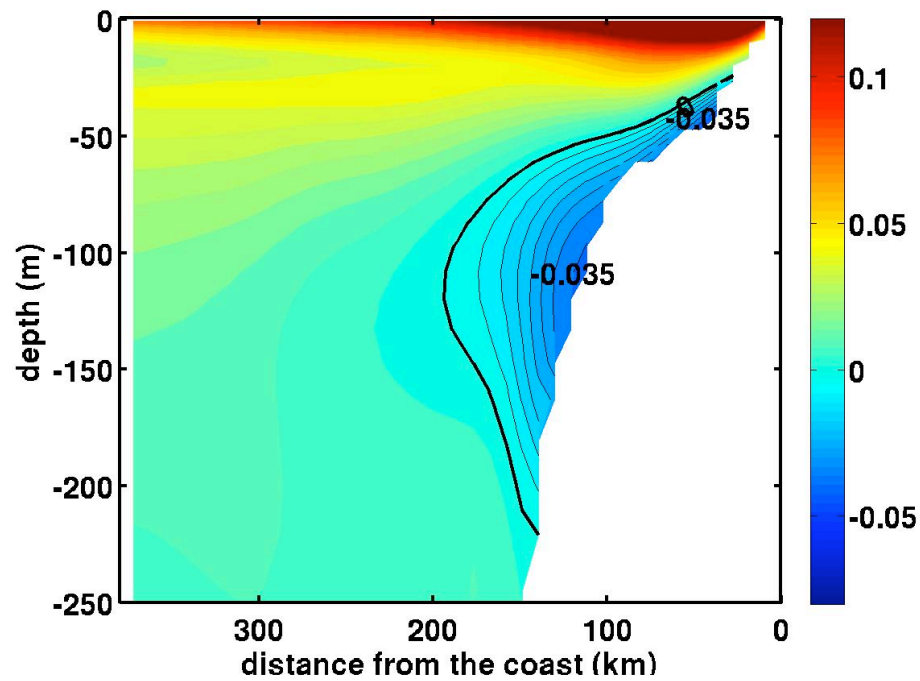
era170a-era169c : annuel



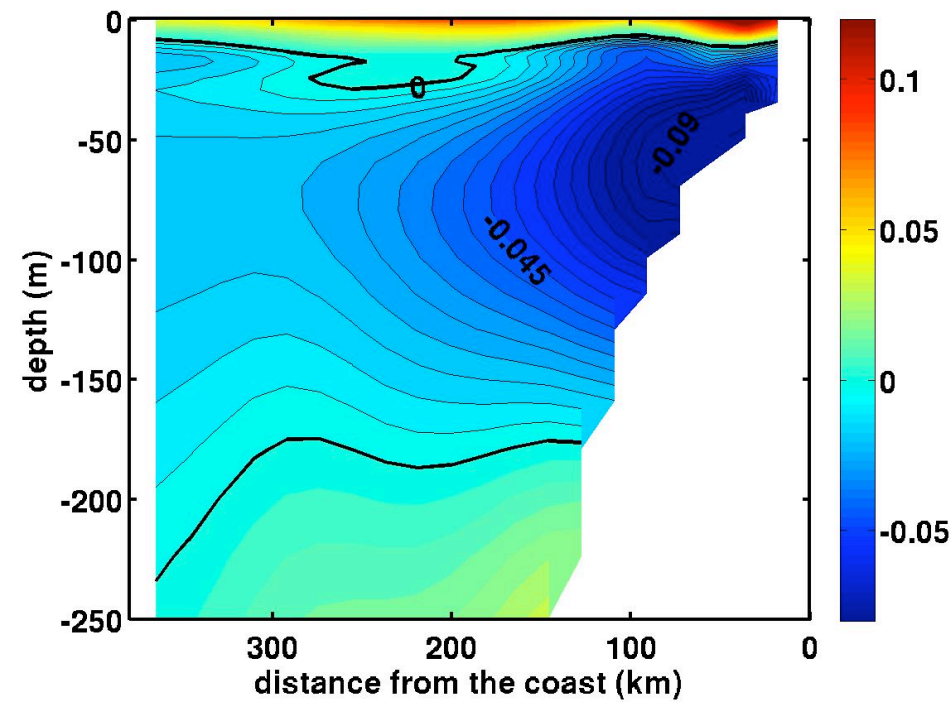
era169c : ete



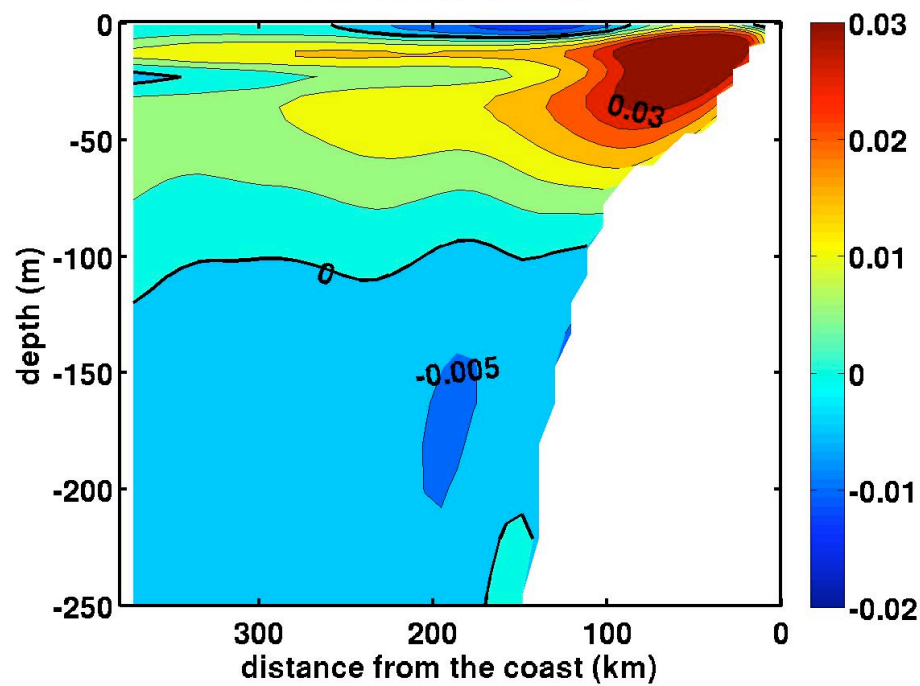
era170a : ete



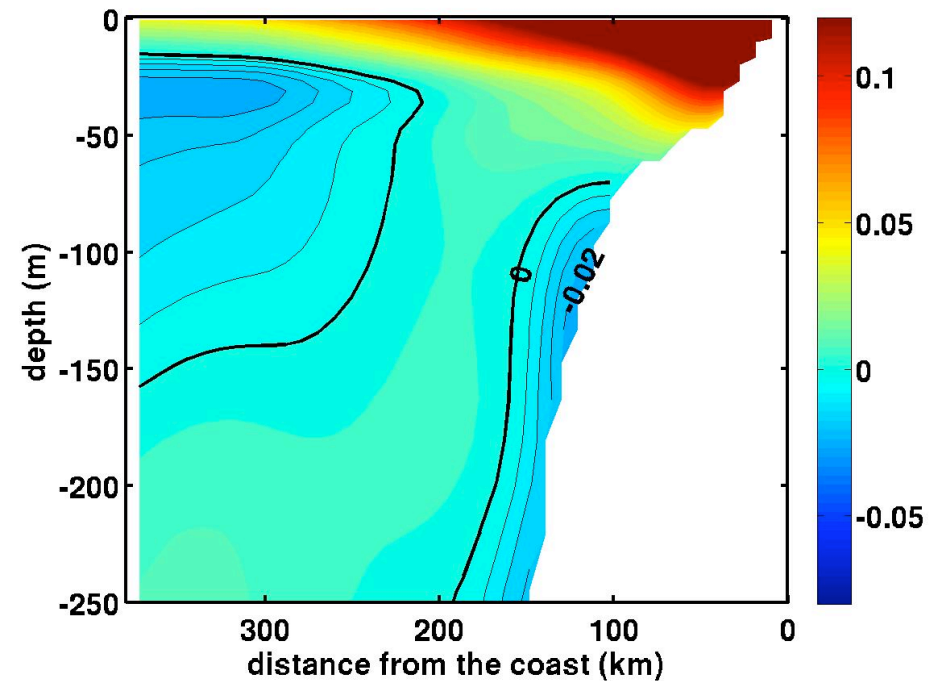
CR-SCOW



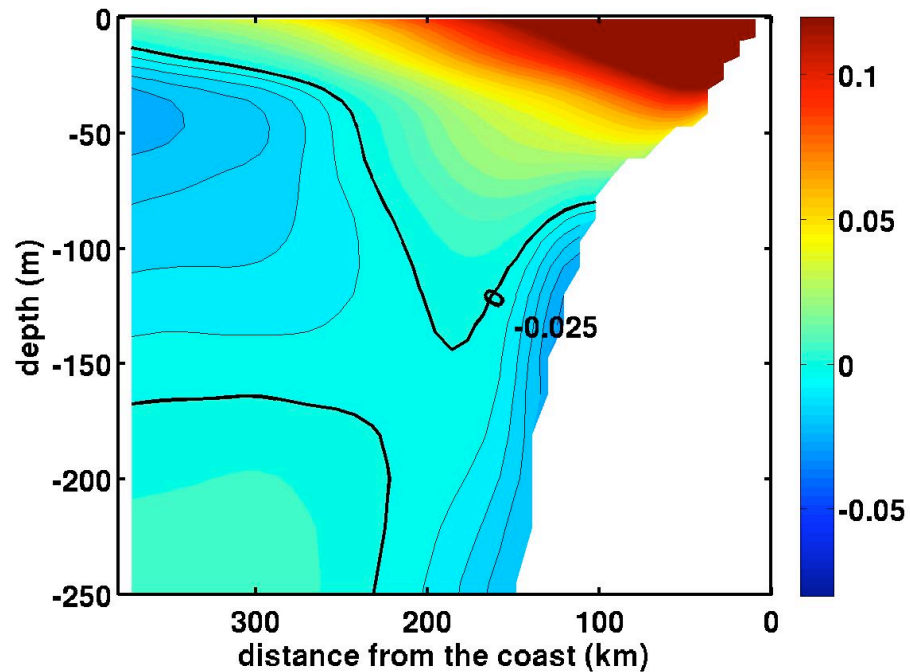
era170a-era169c : ete



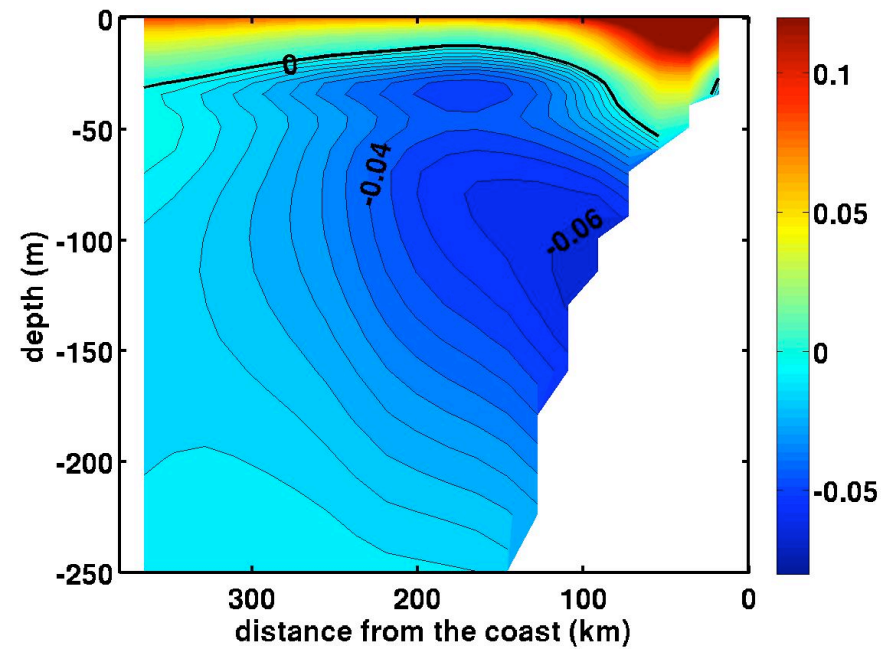
era169c : hiver



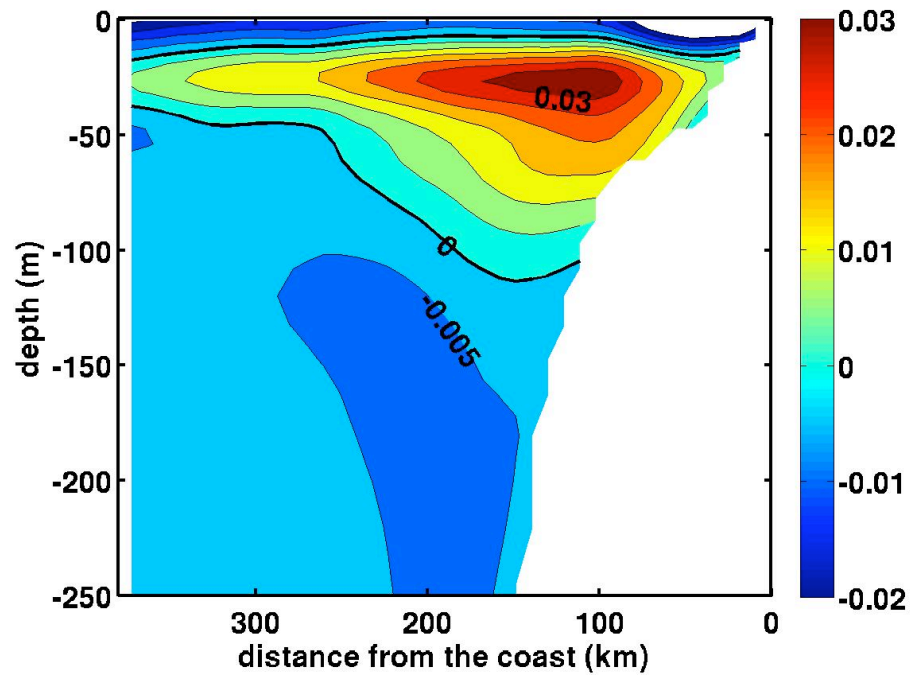
era170a : hiver



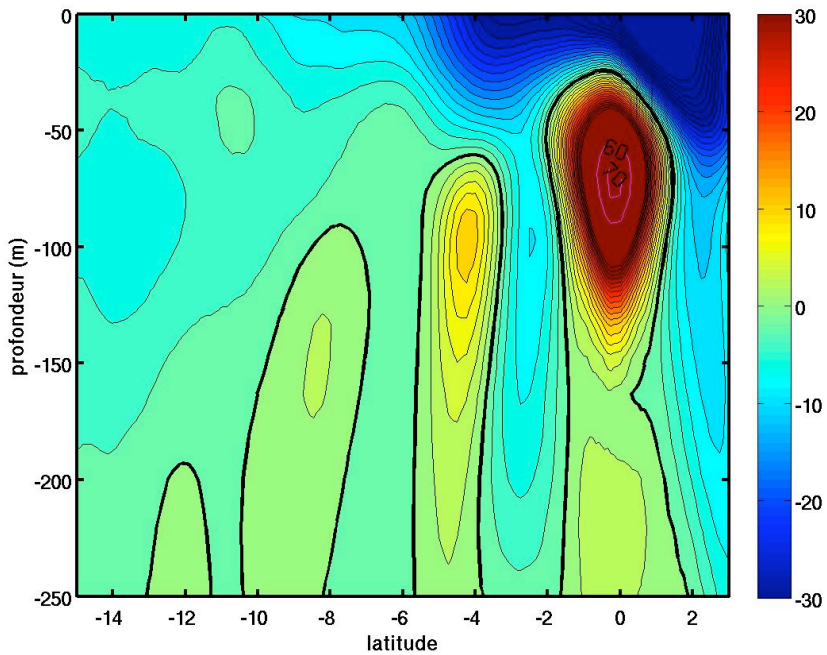
CR-SCOW



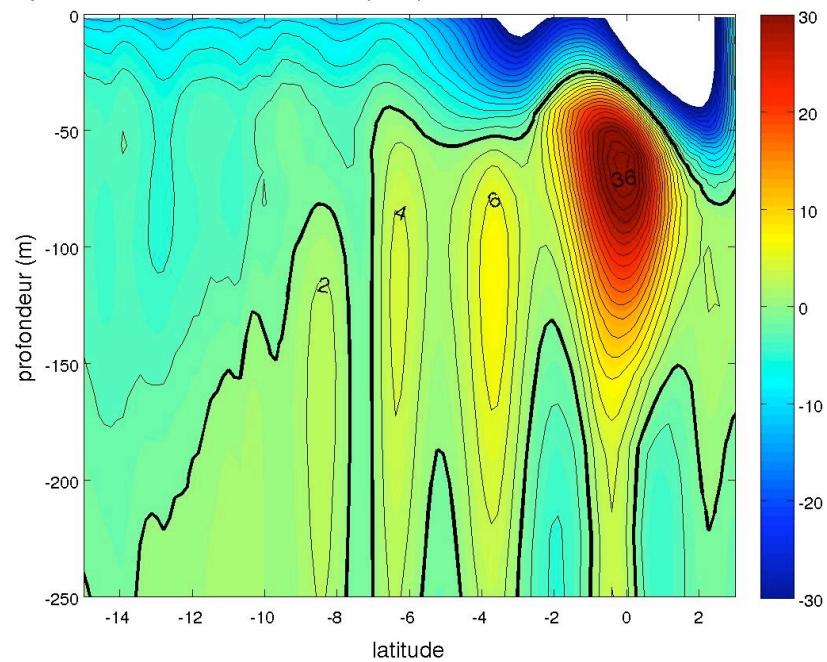
era170a-era169c : hiver



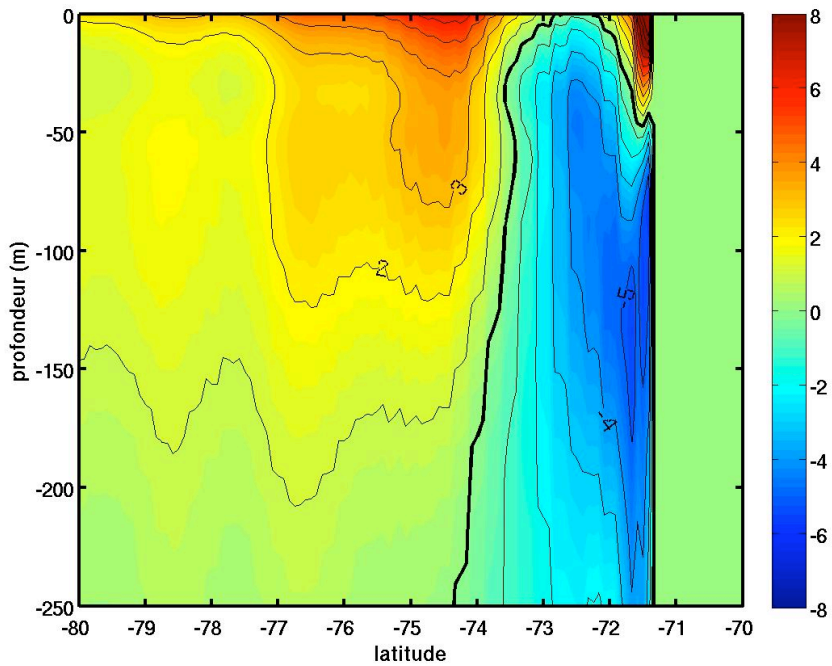
frontiere ouest : era170a



moyenne annuelle de courant zonal (cm/s) a la latitude -95 : control scow stress lu

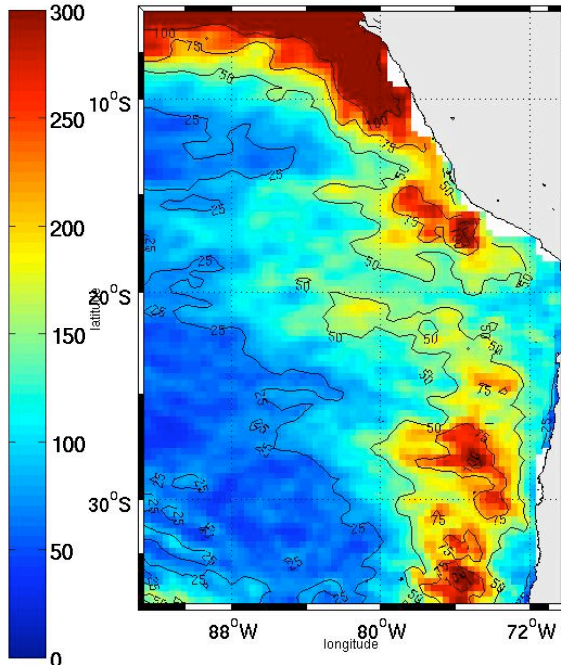
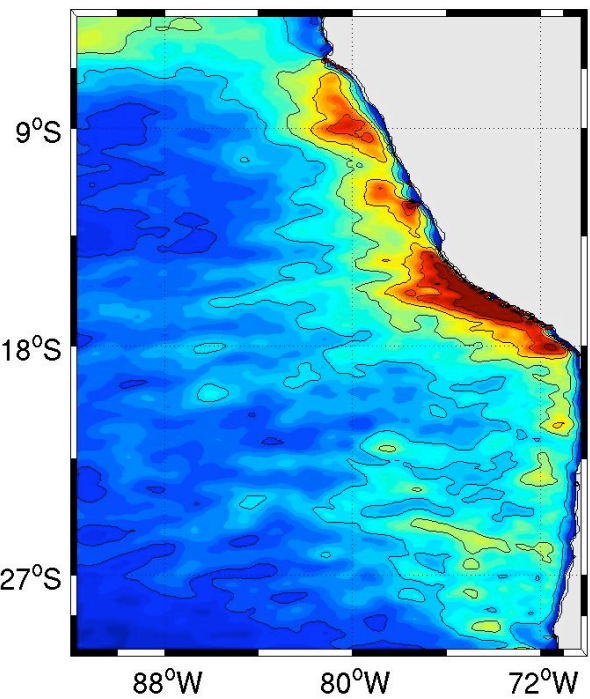


frontiere ouest : era170a

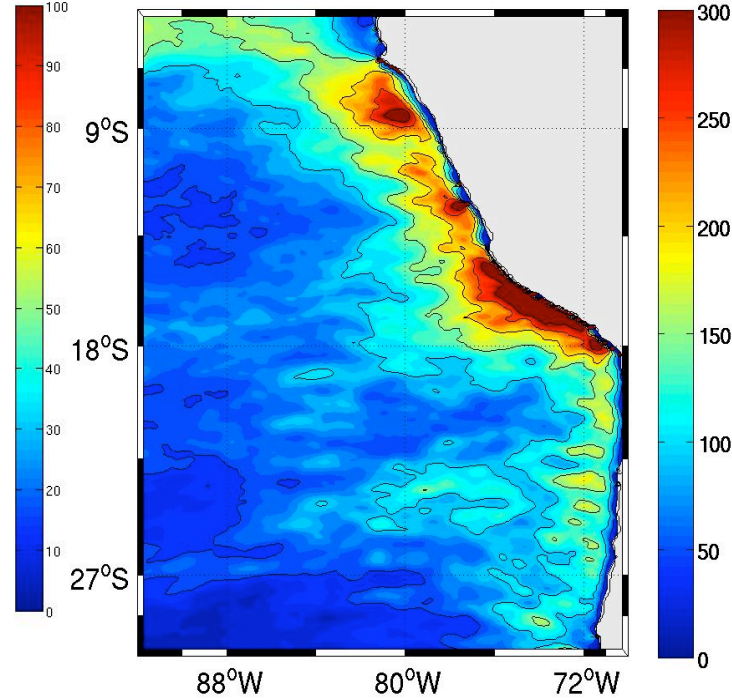


EKE

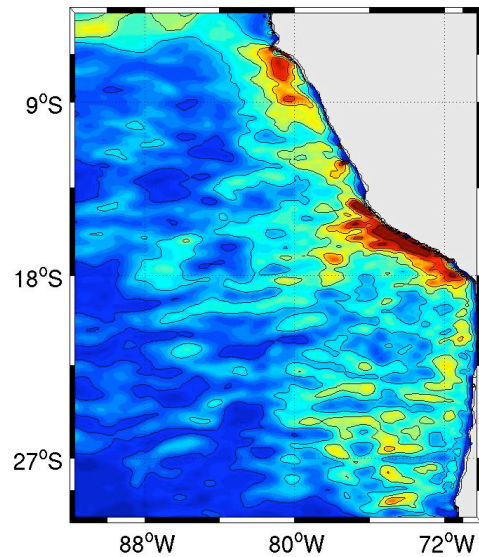
EKE (moyenne annuelle) era169c



EKE (moyenne annuelle) era170a



EKE en ete : era169c



EKE en hiver : era170a

