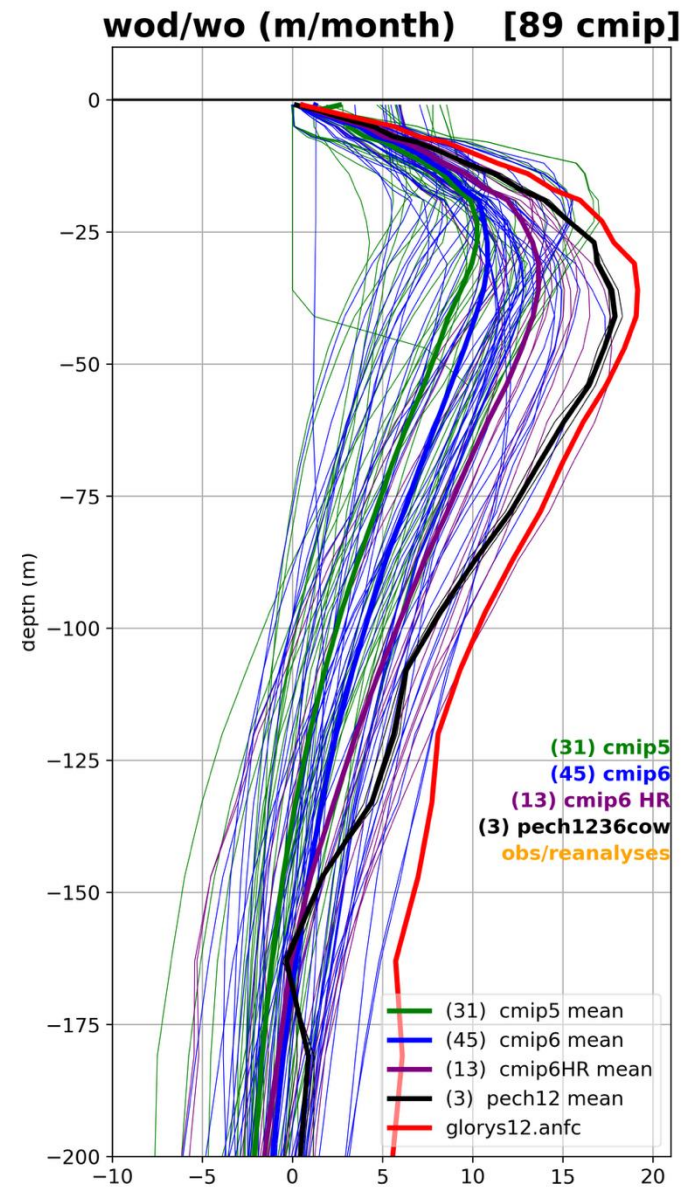
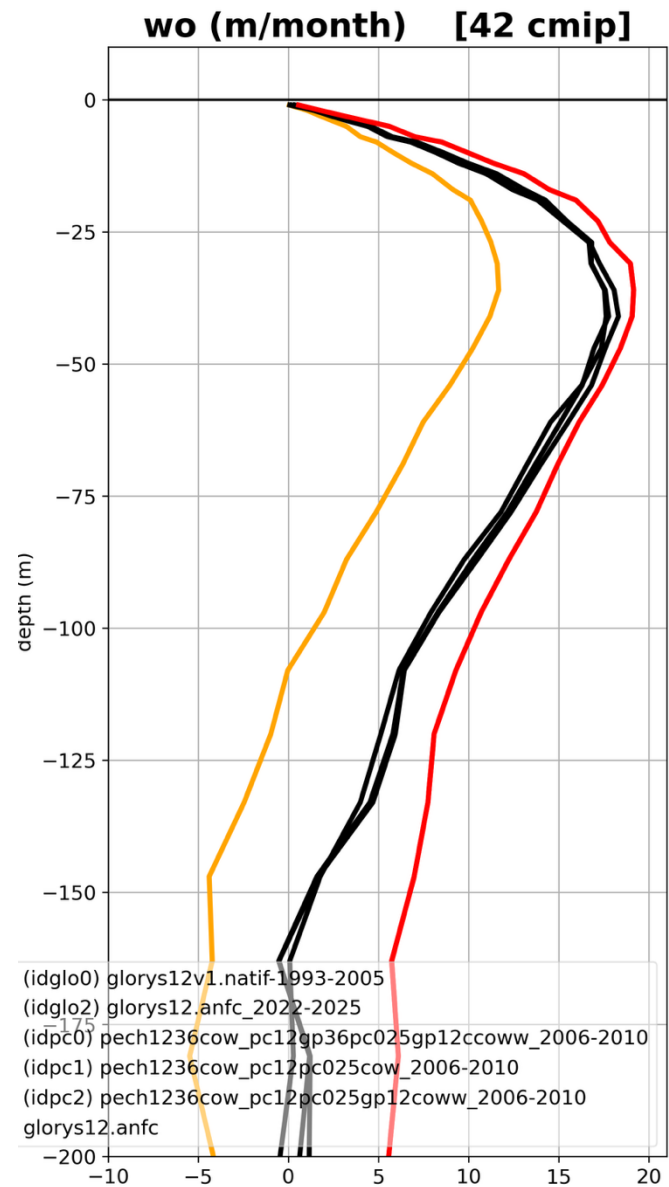


Wo :

- Pour discuter :
  - Casimir
  - Alice et la publie de Diego et Alban (et Juliette)

Global Thermocline Vertical Velocities: a Novel Observation Based Estimate  
Diego Cortés-Morales<sup>1,2</sup>, Alban Lazar<sup>2</sup>, Diana Ruiz Pino<sup>2</sup>, and Juliette Mignot<sup>2</sup>

- A regarder :
  - Test sur la période ?
    - mglo12.anfc\_2022-2025
    - glorys12v1.natif-1993-2005
    - Glorys12v1.1993-2016



### pech 1/12° (2006-20210)

frame 1/33  
displayed range: -0.000770878 to 0.000580447 meter second-1 (-1e-05  
Current: (i=273, j=573) 0 (x=-76.66668, y=-2.665709)

Quit ->1 ⏪ ⏩ ⏸ ⏴ ⏵ Edit ? Delay: [ ] Opts

blu\_re Inv P Inv C M X2 Linear Axes Range Bi-lin Print

Var: lat\_rho lon\_rho **w**

### glorys.natif 1/12° (1993-2005)

frame 1/1 31-Dec-1999 12:00:00 (2 bnds:31-Dec-1993 00:00:00 -> 31-D  
displayed range: -0.00137512 to 0.00136604 m s-1 (-1e-05 to 1e-05 shc  
Current: (i=282, j=519) 7.8274e-06 (x=-77.41666, y=10.60558)

Quit ->1 ⏪ ⏩ ⏸ ⏴ ⏵ Edit ? Delay: [ ] Opts

blu\_re Inv P Inv C M X2 Linear Axes Range Bi-lin Print

Var: time\_counter nav\_lon nav\_lat **vovecrtz**

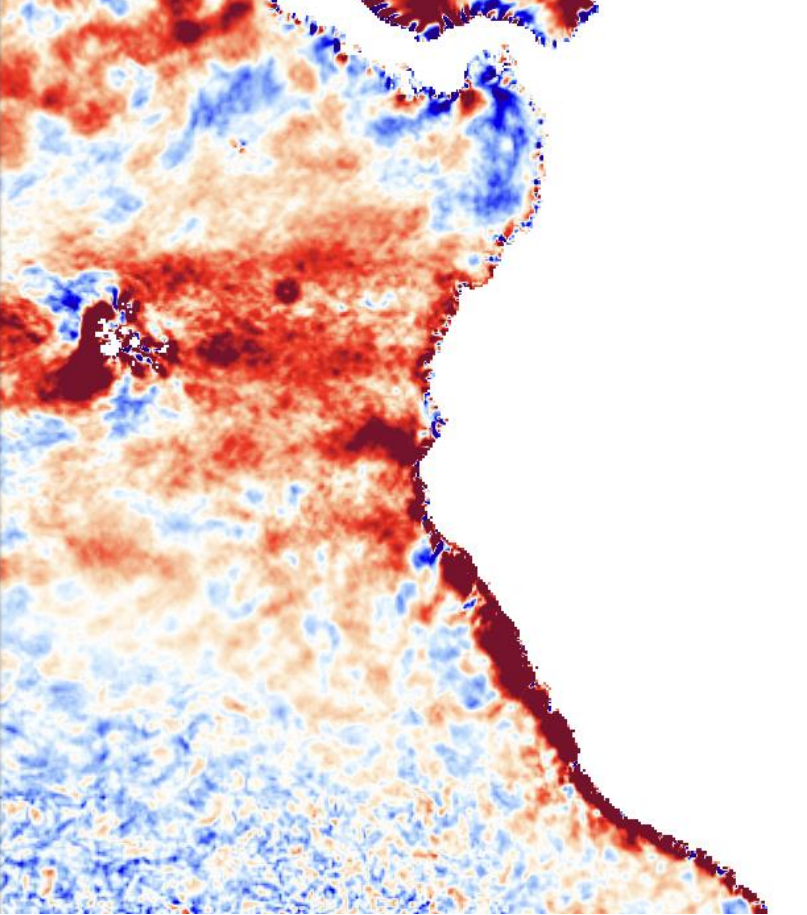
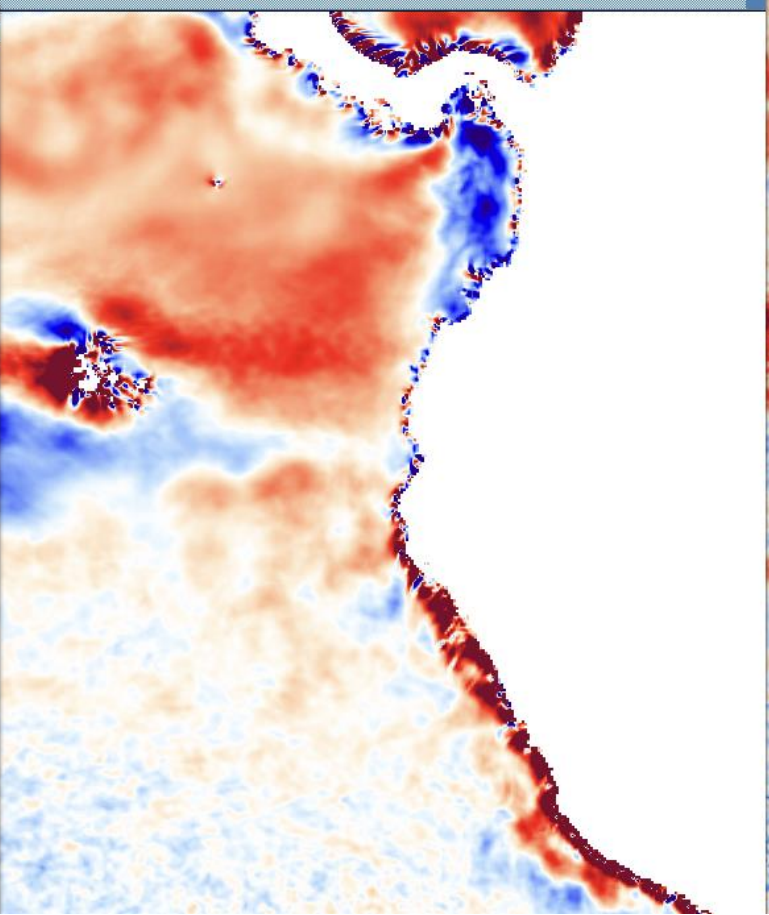
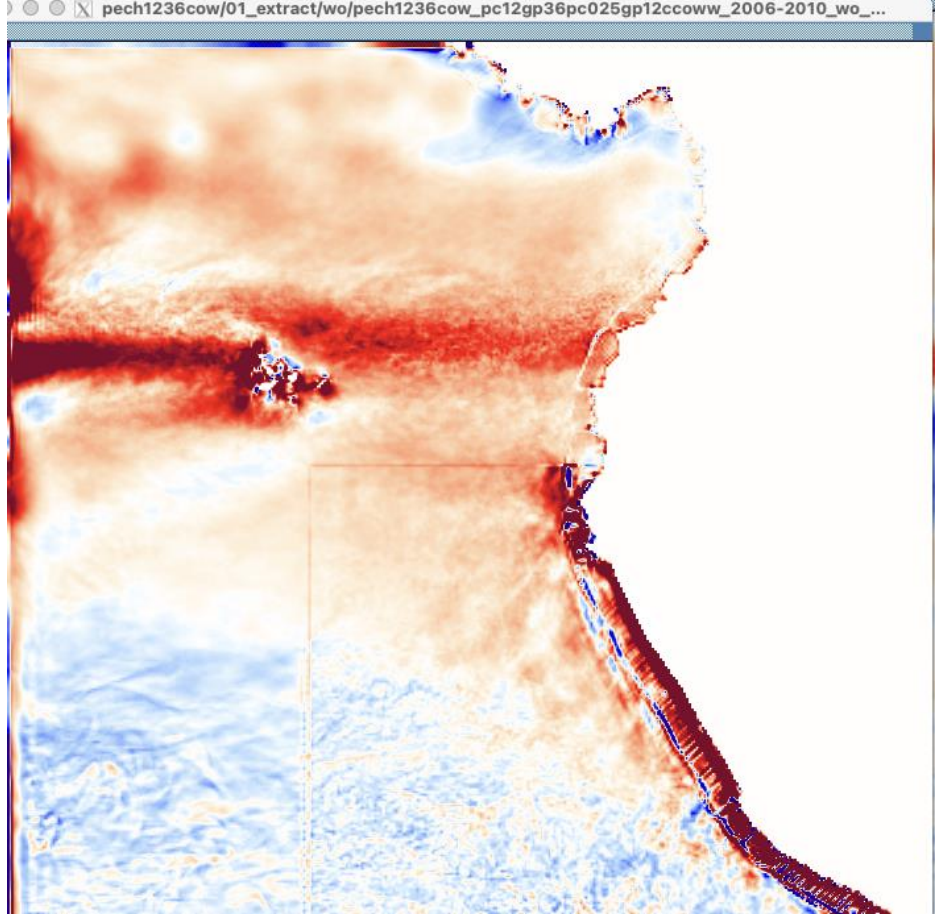
### anfc 1/12° (2022-2025)

frame 1/1 15-Feb-2024 12:00:00 (2 bnds:1-jun-2022 00:00:00 -> 1-nov-  
displayed range: -0.00380832 to 0.00342079 m s-1 (-1e-05 to 1e-05 shc  
Current: (i=1779, j=692) 9.96921e+36 (x=289.25, y=10.66667)

Quit ->1 ⏪ ⏩ ⏸ ⏴ ⏵ Edit ? Delay: [ ] Opts

blu\_re Inv P Inv C M X2 Linear Axes Range Bi-lin Print

Var: time\_bnds **wo**



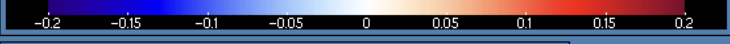
-bash: bg: job 9 already in background

### pech 1/12° (2006-20210)

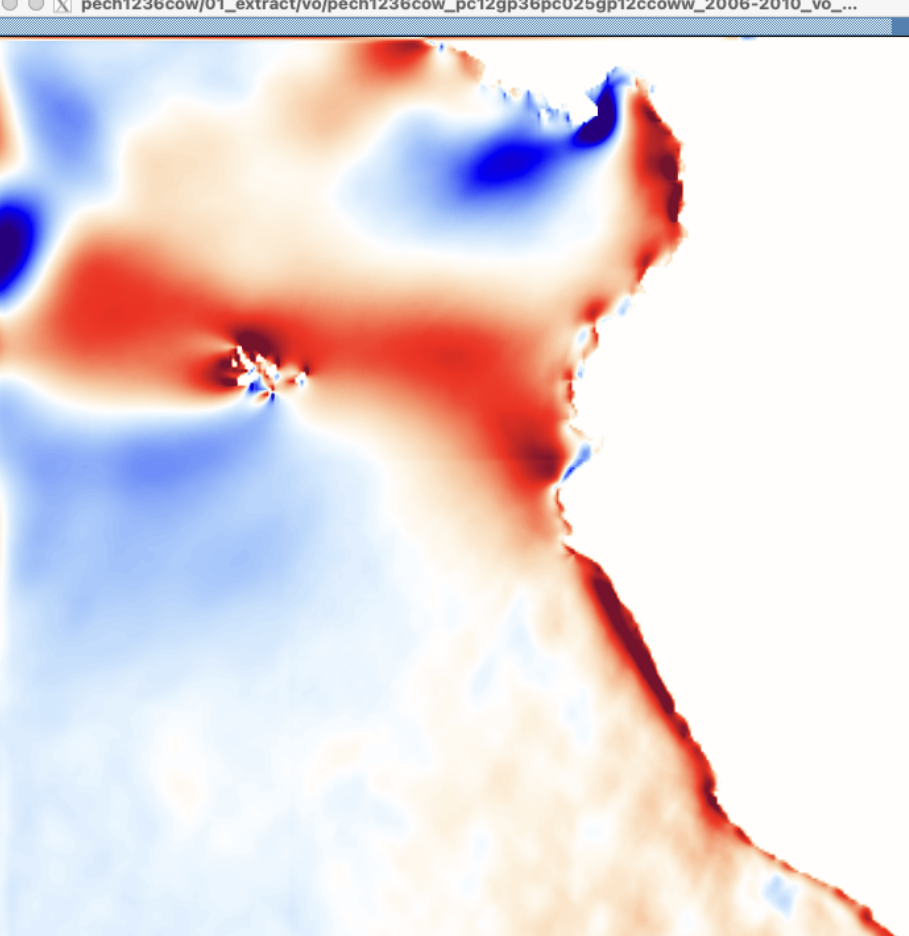
displayed range: -0.696261 to 0.397753 meter second-1 (-0.2 to 0.2 shown)  
Current: (i=289, j=711) 0 (x=-75.33334, y=8.839713)

Quit ->1 << < || > >> Edit ? Delay: [ ] Opts

blu\_re Inv P Inv C M X2 Linear Axes Range Bi-lin Print



Var: lat\_v lon\_v v

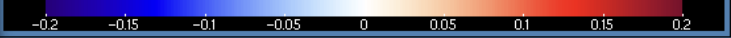


### glorys.natif 1/12° (1993-2005)

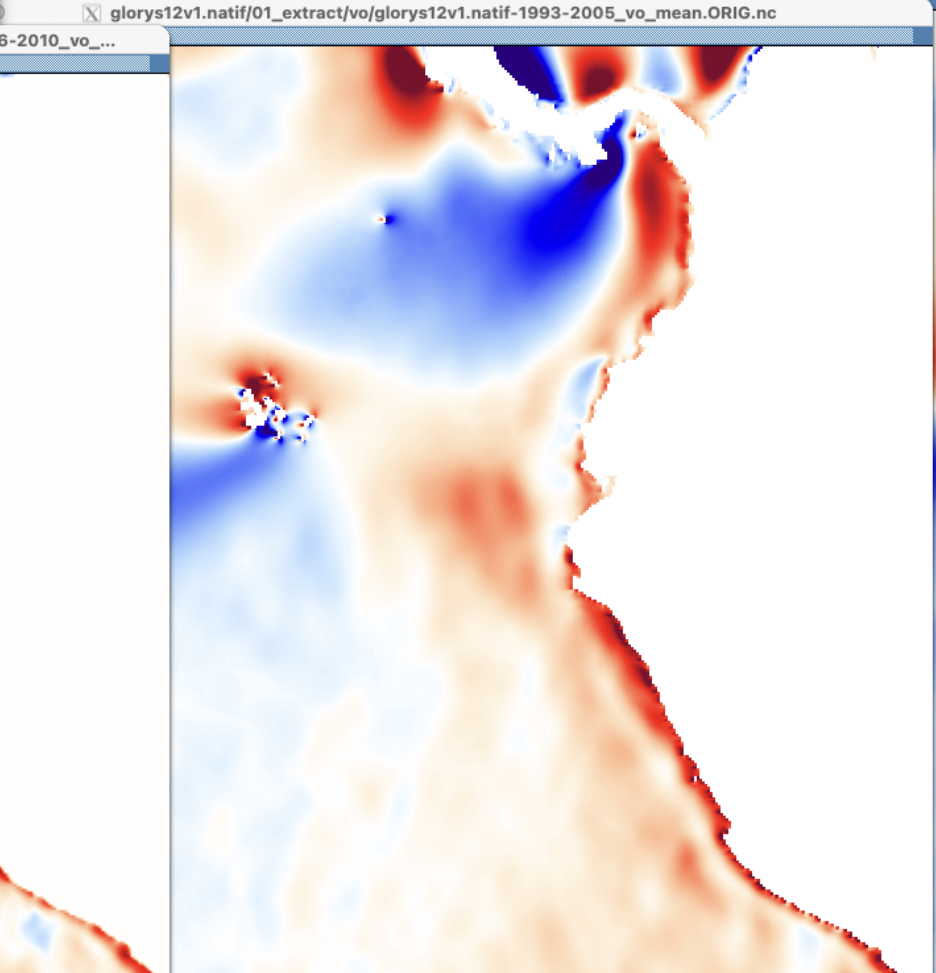
displayed range: -0.719463 to 0.379785 m s-1 (-0.2 to 0.2 shown)  
Current: (i=291, j=453) 9.96921e+36 (x=-76.66666, y=5.118179)

Quit ->1 << < || > >> Edit ? Delay: [ ] Opts

blu\_re Inv P Inv C M X2 Linear Axes Range Bi-lin Print



Var: time\_counter nav\_lon nav\_lat vomecrty

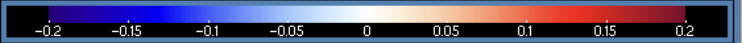


### anfc 1/12° (2022-2025)

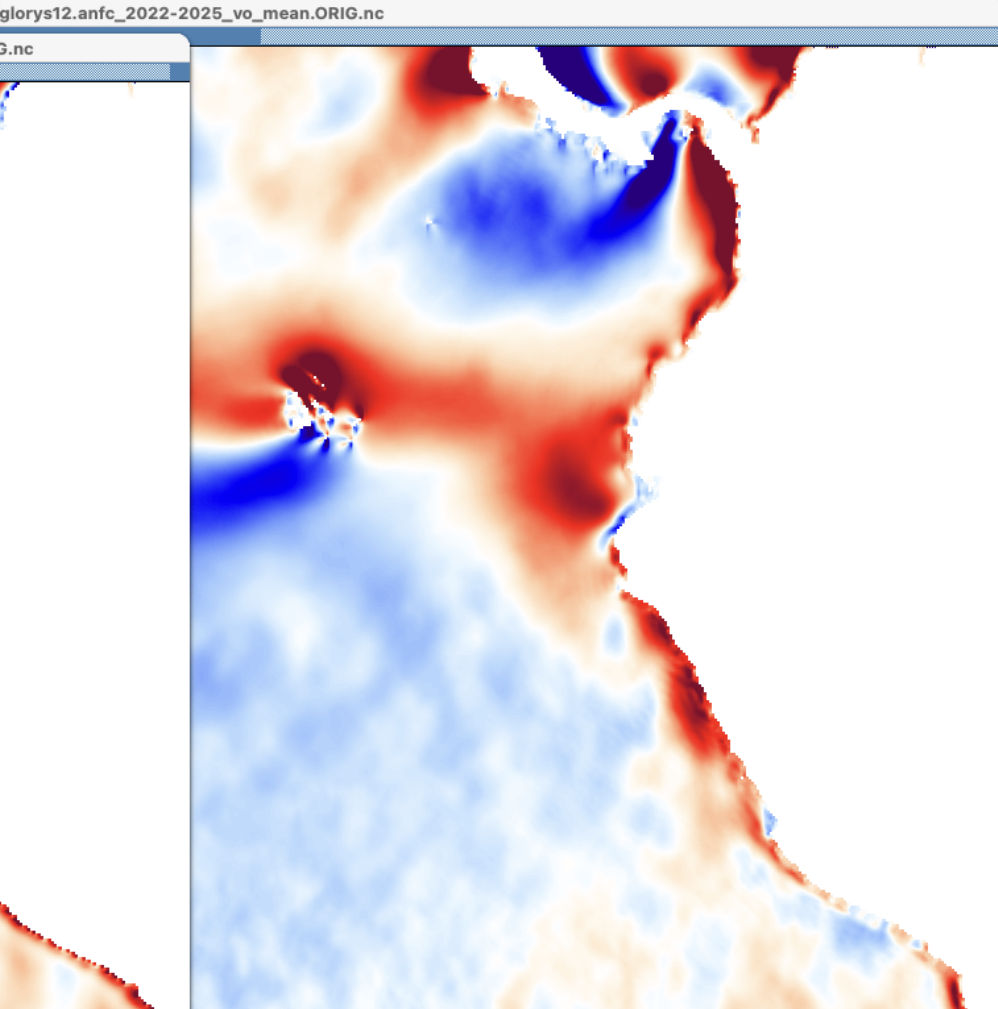
displayed range: -0.74598 to 0.848714 m s-1 (-0.2 to 0.2 shown)  
Current: (i=1580, j=0) 0.022045 (x=272.6667, y=-47)

Quit ->1 << < || > >> Edit ? Delay: [ ] Opts

blu\_re Inv P Inv C M X2 Linear Axes Range Bi-lin Print



Var: time\_bnds vo



pech 1/12° (2006-20210)

glorys.natif 1/12° (1993-2005)

anfc 1/12° (2022-2025)

Quit ->1 << < || > >> Edit ? Delay: Opts

blu\_re Inv P Inv C M X2 Linear Axes Range Bi-lin Print

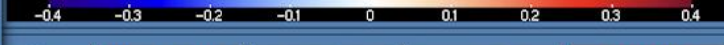


Var: lat\_u lon\_u u

Current: (i=382, j=512) 9.96921e+36 (x=-69.125, y=10.03168)

Quit ->1 << < || > >> Edit ? Delay: Opts

blu\_re Inv P Inv C M X2 Linear Axes Range Bi-lin Print

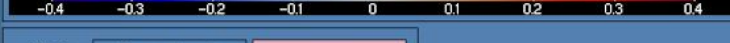


Var: time\_counter nav\_lon nav\_lat vozocrtx

Current: (i=1088, j=657) 0.271282 (x=231.6667, y=7.75)

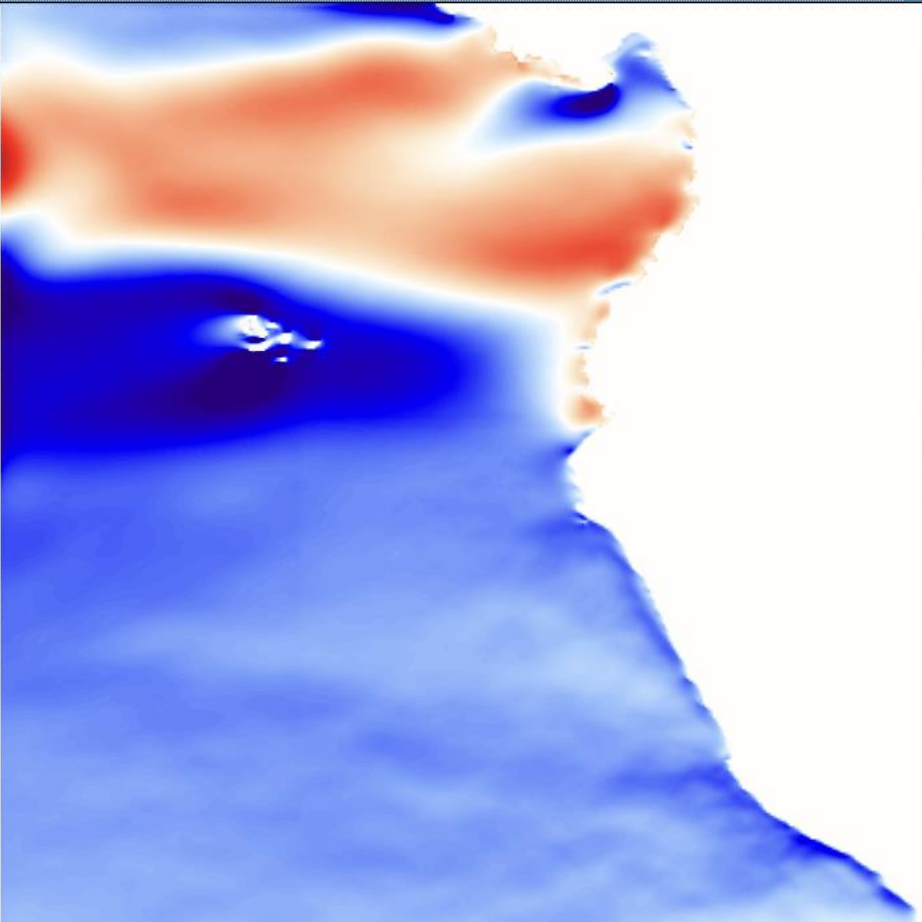
Quit ->1 << < || > >> Edit ? Delay: Opts

blu\_re Inv P Inv C M X2 Linear Axes Range Bi-lin Print

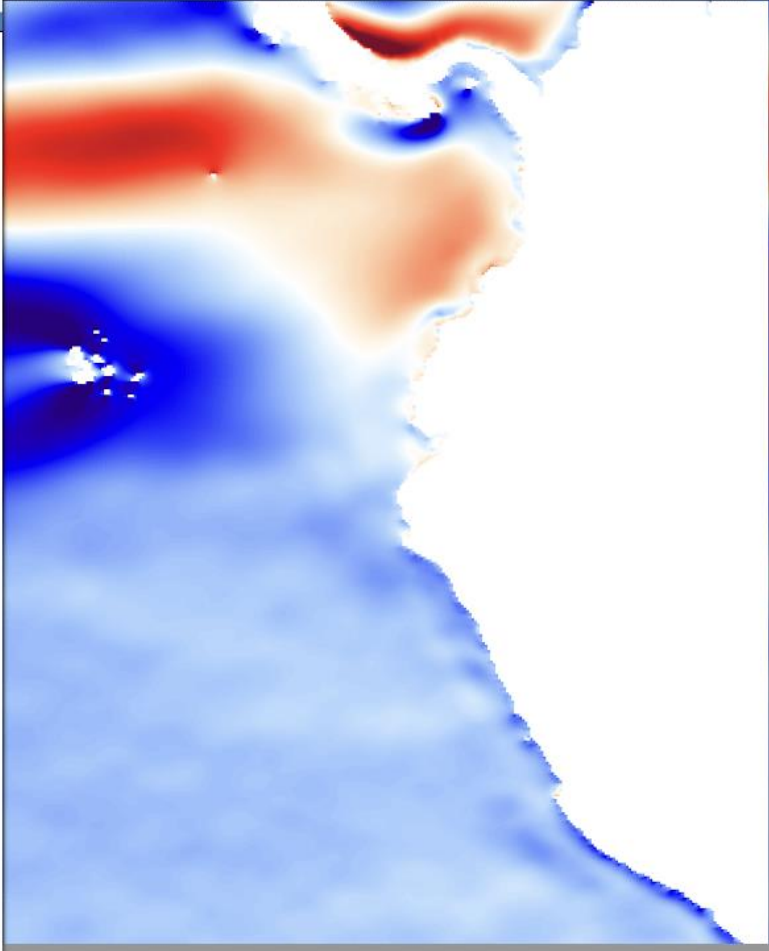


Var: time\_bnds uo

pech1236cow/01\_extract/uo/pech1236cow\_pc12gp36pc025gp12ccoww\_2006-2010\_uo\_...



uo/glorys12v1.natif-1993-2005\_uo\_mean.ORIG.nc



glorys12.anfc\_2022-2025\_uo\_mean.ORIG.nc

