

Les bons candidats

- **35** - (id6c35) cmip6_**FGOALS-f3-H**_hist-1950_19890101-20051231_Omon_1m_r1i1p1f1_gn
 - *wo super fort. Sst OK alors que Tsub bcp trop chaud*
- **43** -(id6c43) cmip6_**GISS-E2-2-G**_historical_19890101-20051231_Omon_1m_r1i1p1f1_gn
- **2** -(id6c2) cmip6_**BCC-CSM2-HR**_hist-1950_19890101-20051231_Omon_1m_r1i1p1f1_gn
- **44** -(id6c44) cmip6_**HadGEM3-GC31-HH**_hist-1950_19890101-20051231_Omon_1m_r1i1p1f1_gn
- **45** -(id6c45) cmip6_HadGEM3-GC31-**HM**_hist-1950_19890101-20051231_Omon_1m_r1i1p1f1_gn
- **47** -(id6c47) cmip6_HadGEM3-GC31-**MM**_hist-1950_19890101-20051231_Omon_1m_r1i1p1f1_gn
- **46** -(id6c46) cmip6_HadGEM3-GC31-**LL**_hist-1950_19890101-20051231_Omon_1m_r1i1p1f1_gn
 - Les 3 HH HM MM un wo $\sim=15$ LL Basse résolution : wo $\sim=10$
- **32** -(id6c32) cmip6_**ECMWF-IFS-HR**_hist-1950_19890101-20051231_Omon_1m_r1i1p1f1_gn
 - Bon élève
- **64** -(id6c64) cmip6_**UKESM1-0-LL**_historical_19890101-20051231_Omon_1m_r1i1p1f2_gn
- **17** -(id6c17) cmip6_**CMCC-CM2-VHR4_hist-1950**_19890101-20051231_Omon_1m_r1i1p1f1_gn
 - *HR pourtant wo faible (~ 10 au lieu de 15 pour les HR)*
- *Remarque : **FGOALS-f3-H** et **HadGEM3-GC31-HH** se ressemblent peut-être suffisamment pour éliminer FGOALS et garder **HadGEM3-GC31-HH** **

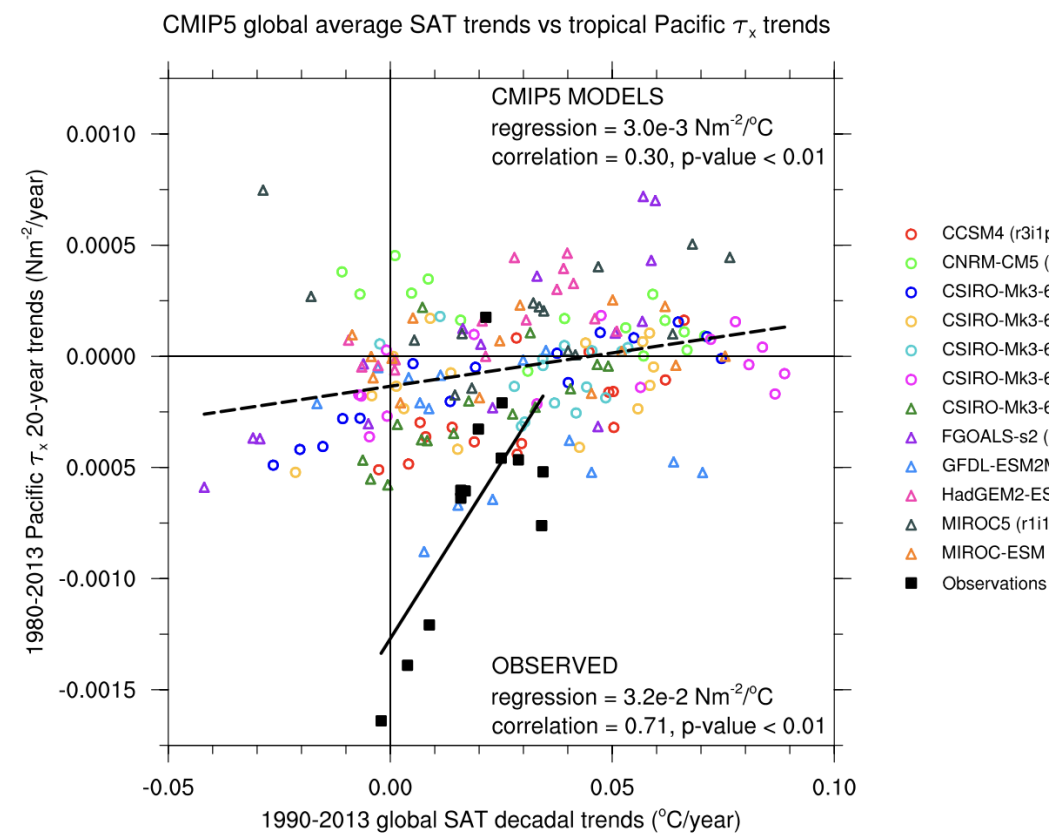
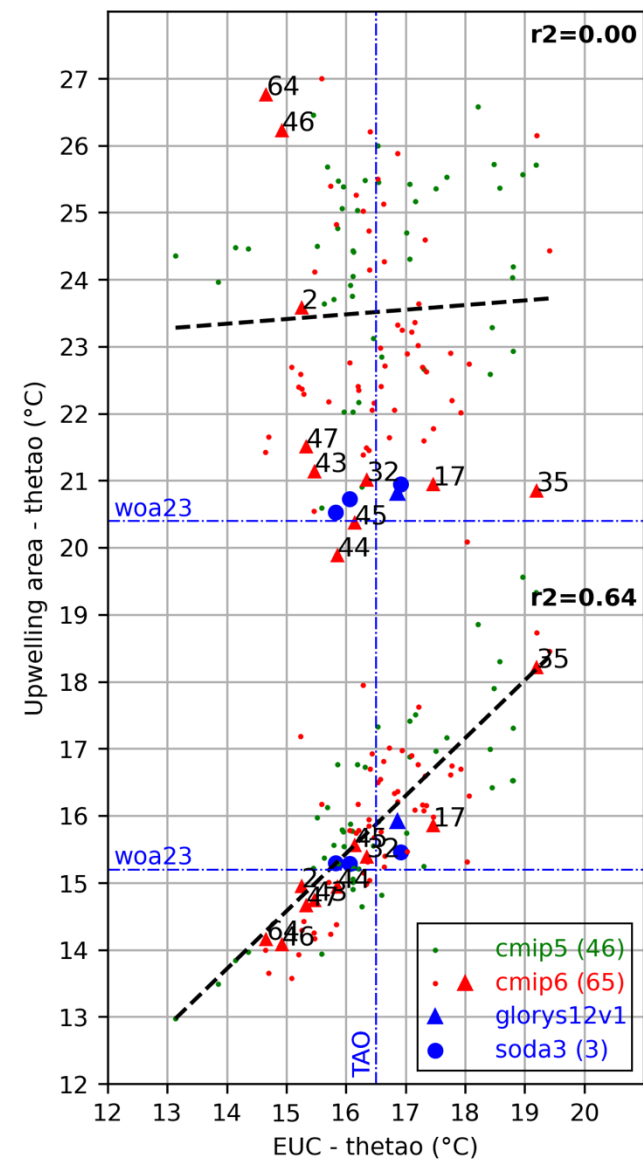


Figure S7 | Twenty-year trends in tropical Pacific winds vs. decadal trends in global surface air temperature (SAT) in observations and models. The global SAT trends are calculated over the last decade of each 20-year wind trend period; so for example, the wind stress trend for the 20-year period 1980–1999 is plotted against the decadal SAT trend from 1990–1999. Model trends are sampled during the period 1980–2013 and observations from 1980–2011. Only those CMIP5 model experiments that, like observations, include at least one hiatus decade during 1990–2013 are shown, as defined by a negative decadal trend in global mean SAT. The wind stress trends are computed over the region 6°N–6°S and 180°–150°W, corresponding to where the Interdecadal

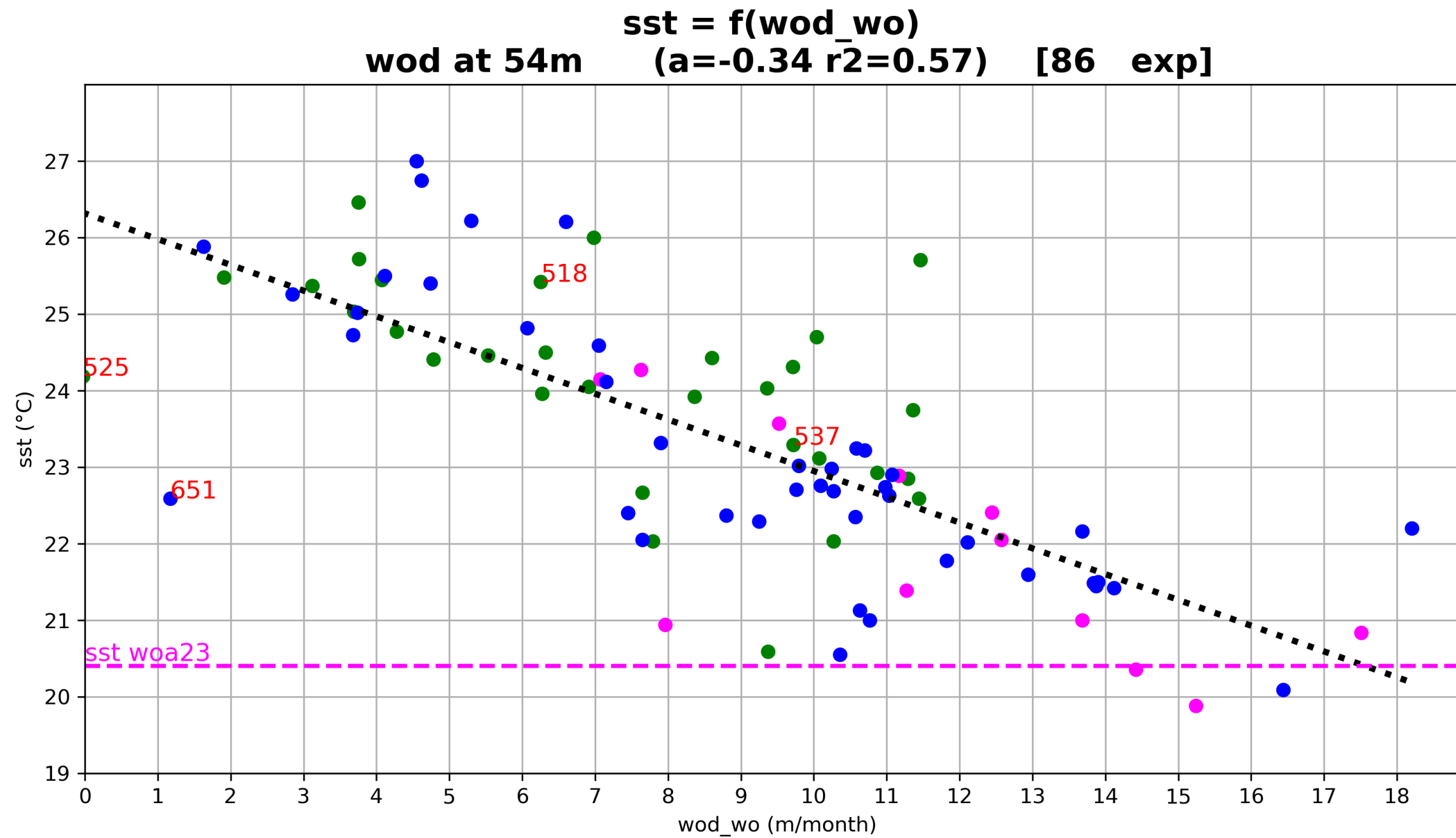


635: w super fort. Tsub foireux → SST ok
 643:
 62: Tsub froid et Tsurf pousse
 644: collé au 62 en Tsub, Tair
 632: le gros parfait
 664: Wmax ok mais très haut
 ou rester avec 646 (= HADGER LL)

$$S_{st} = f(w_o / w_{od})$$

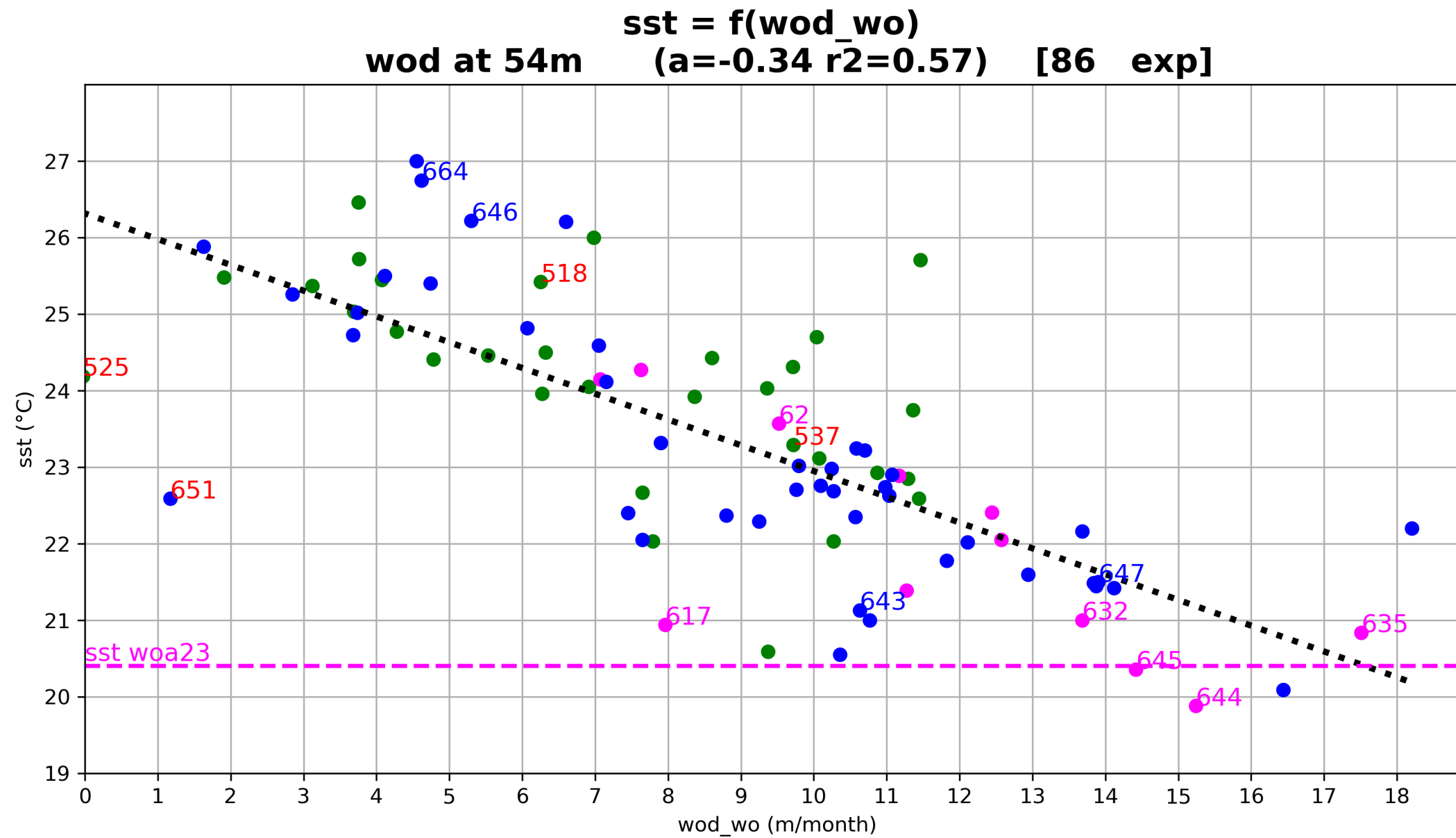
Tous les wo/wod

- Highligt rouge : les wo « bizarres »



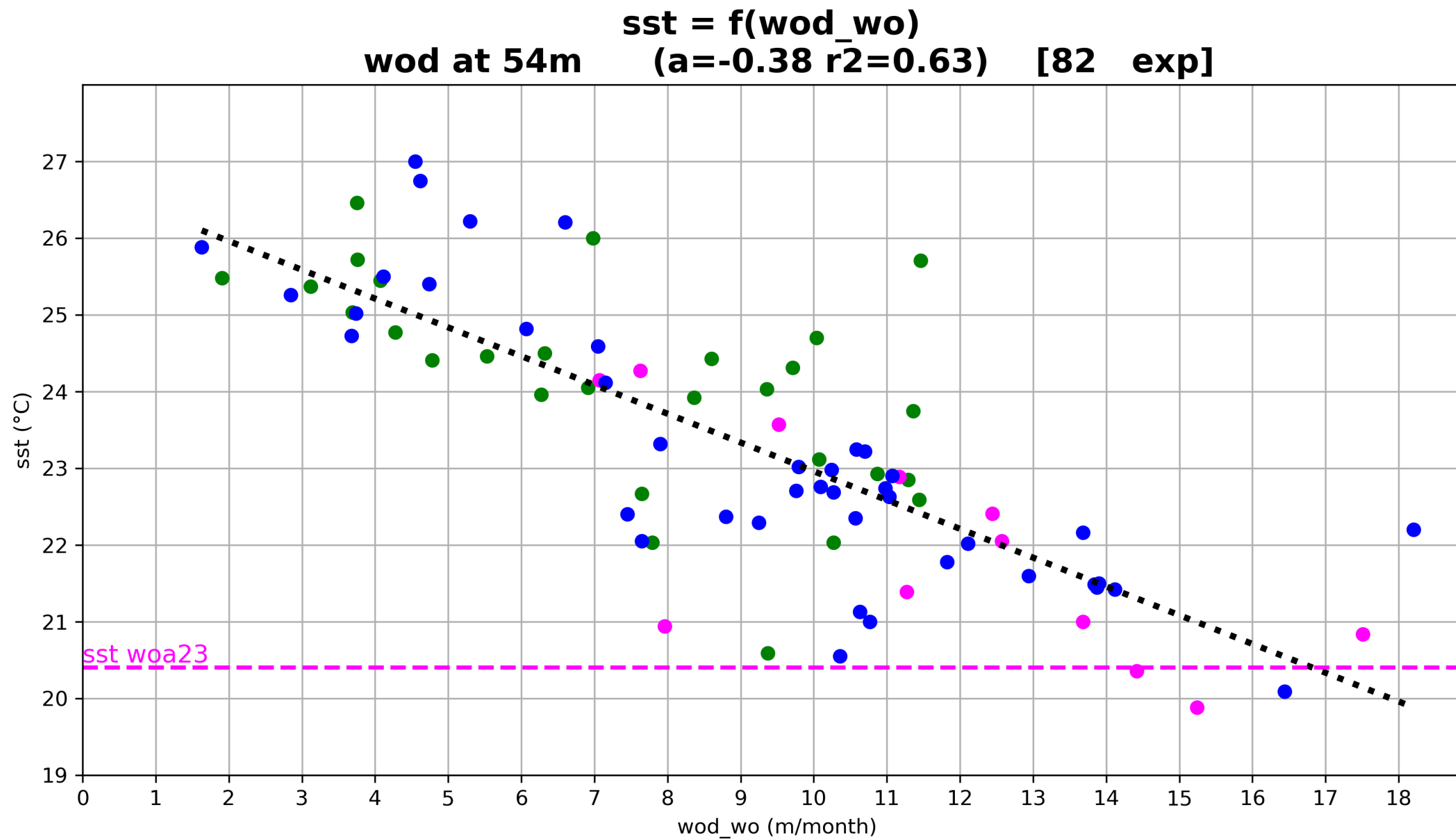
Tous les wo/wod

- Highlight **rouge** : les wo « **bizarres** »
- Highlight les bons candidats



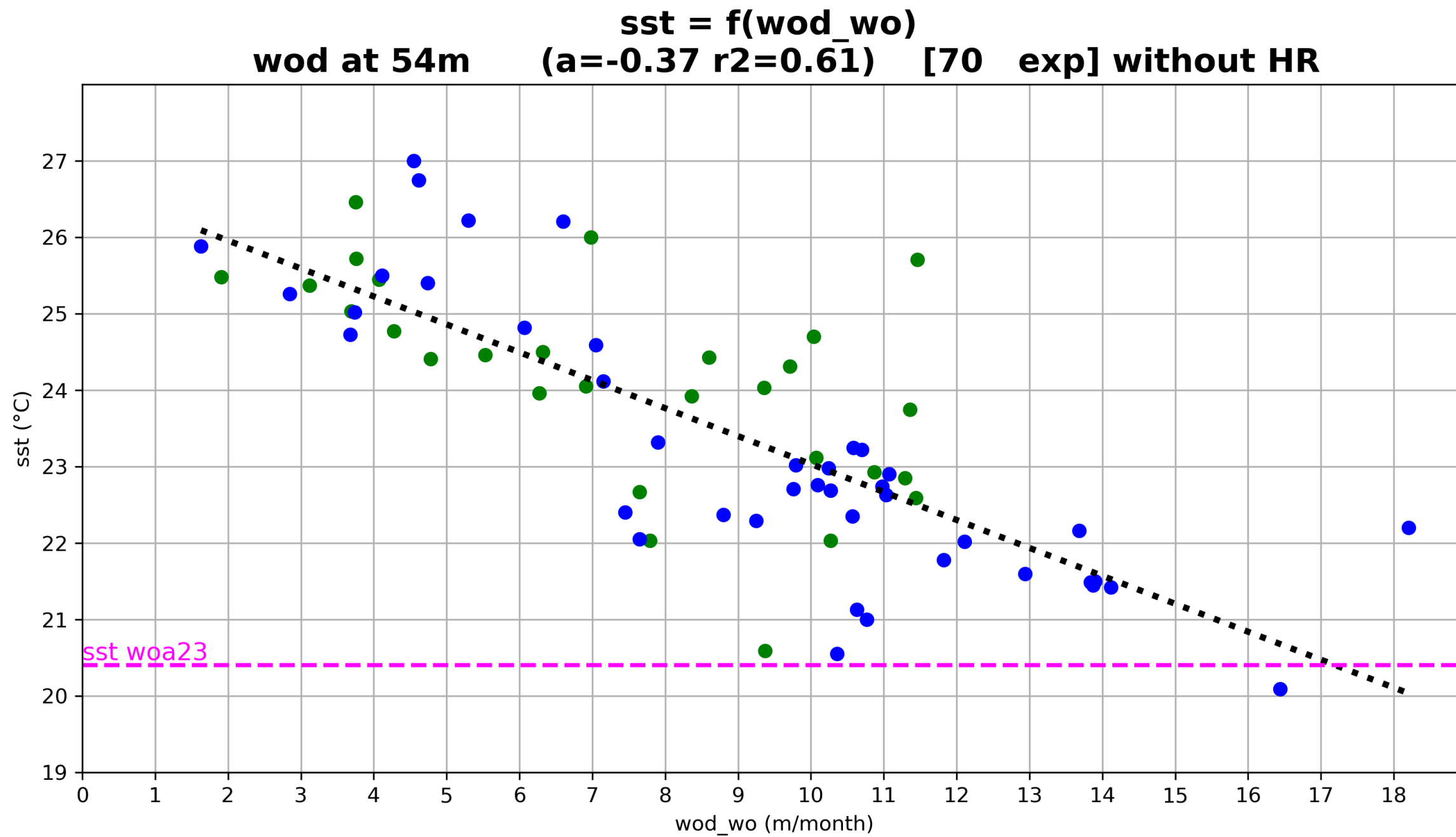
Tous les wo/wod
(- les bizarres)

- Highlight rouge : les wo « bizarres »
- Highlight les bons candidats



Tous les wo/wod
(- les **bizarres** – les HR)

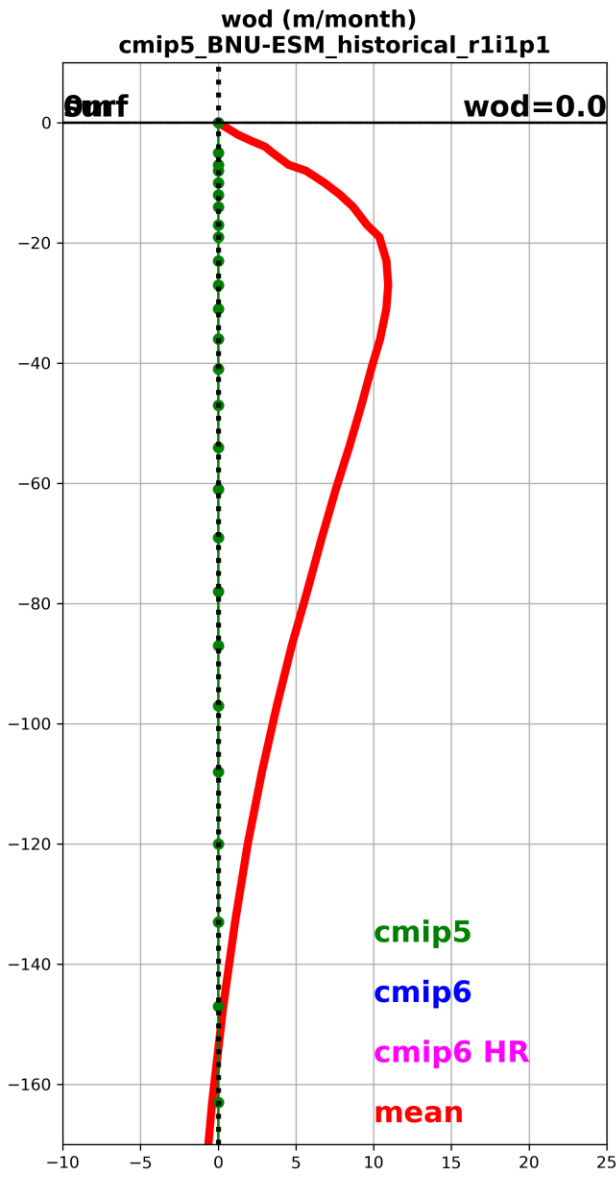
- Highlight **rouge** : les wo « **bizarres** »
- Highlight les bons candidats



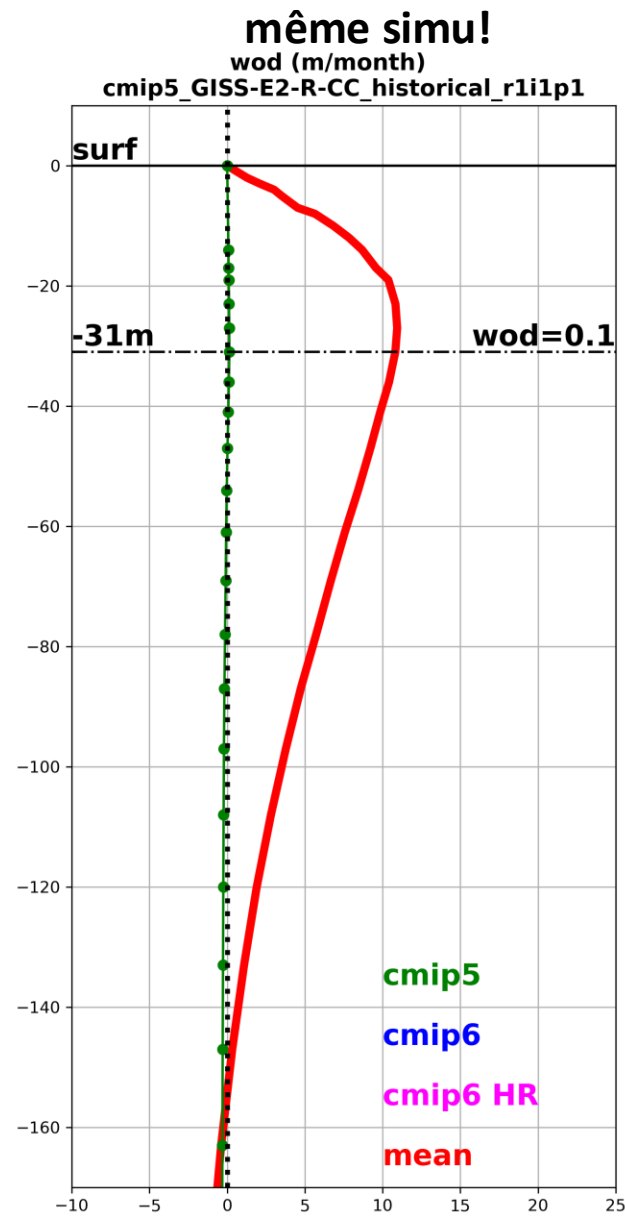
Black list wod/wo

POURQUOI??

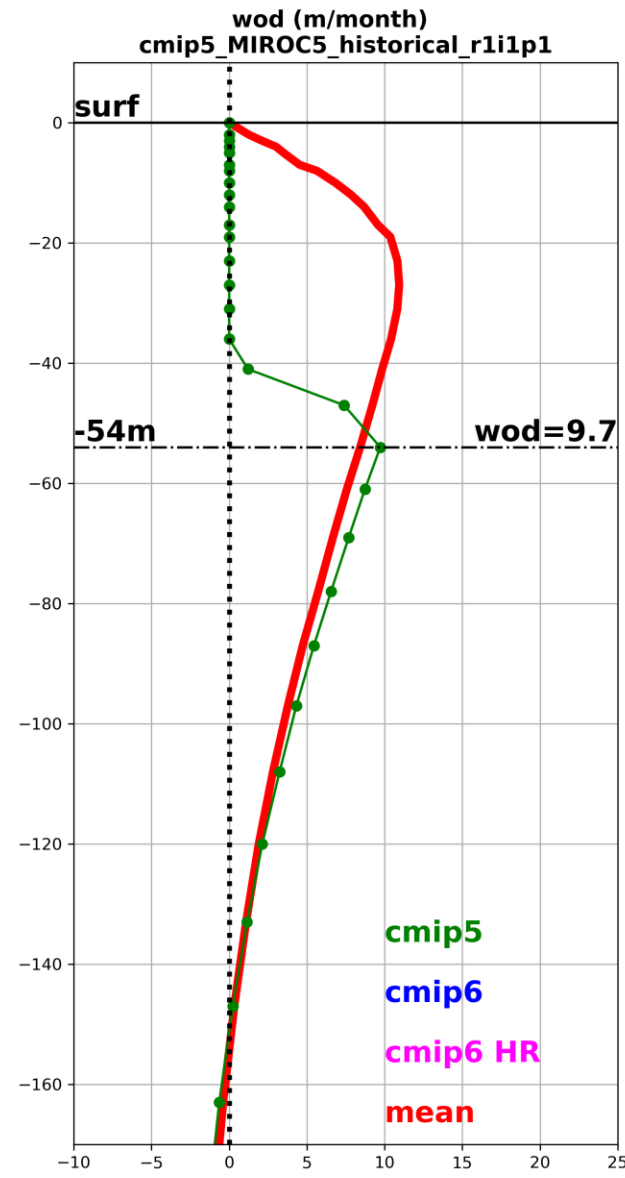
(id5c2)



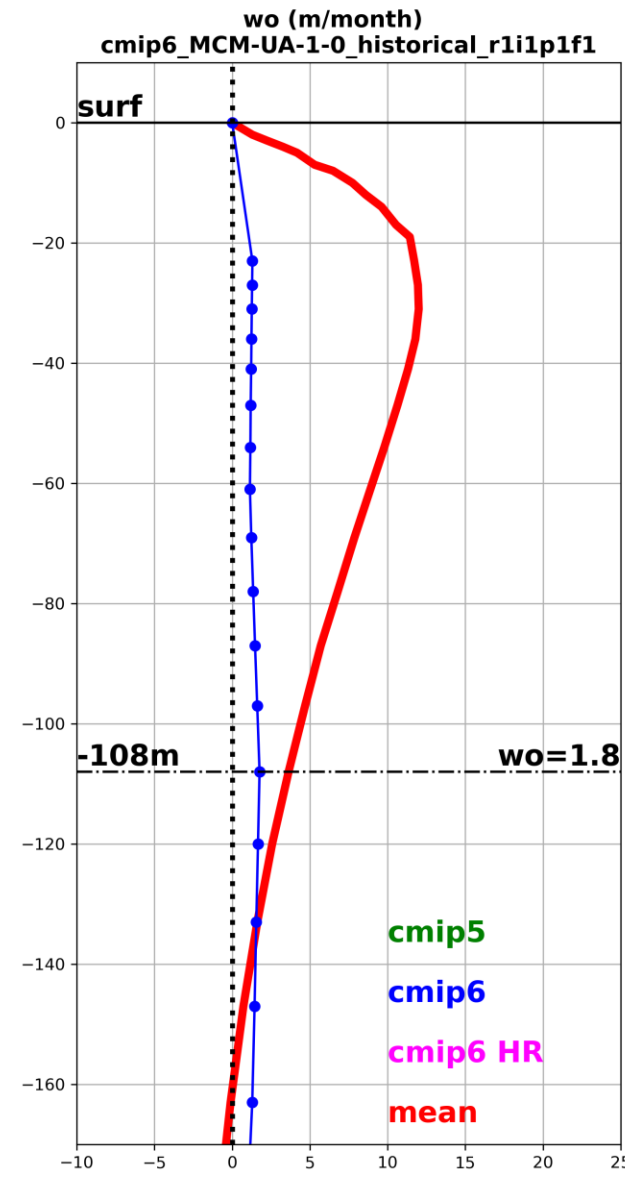
**(id5c25)
(id5c26)
cmip5_GISS-E2-R
Quasiment la**



id5c37



id6c51



id5c18

