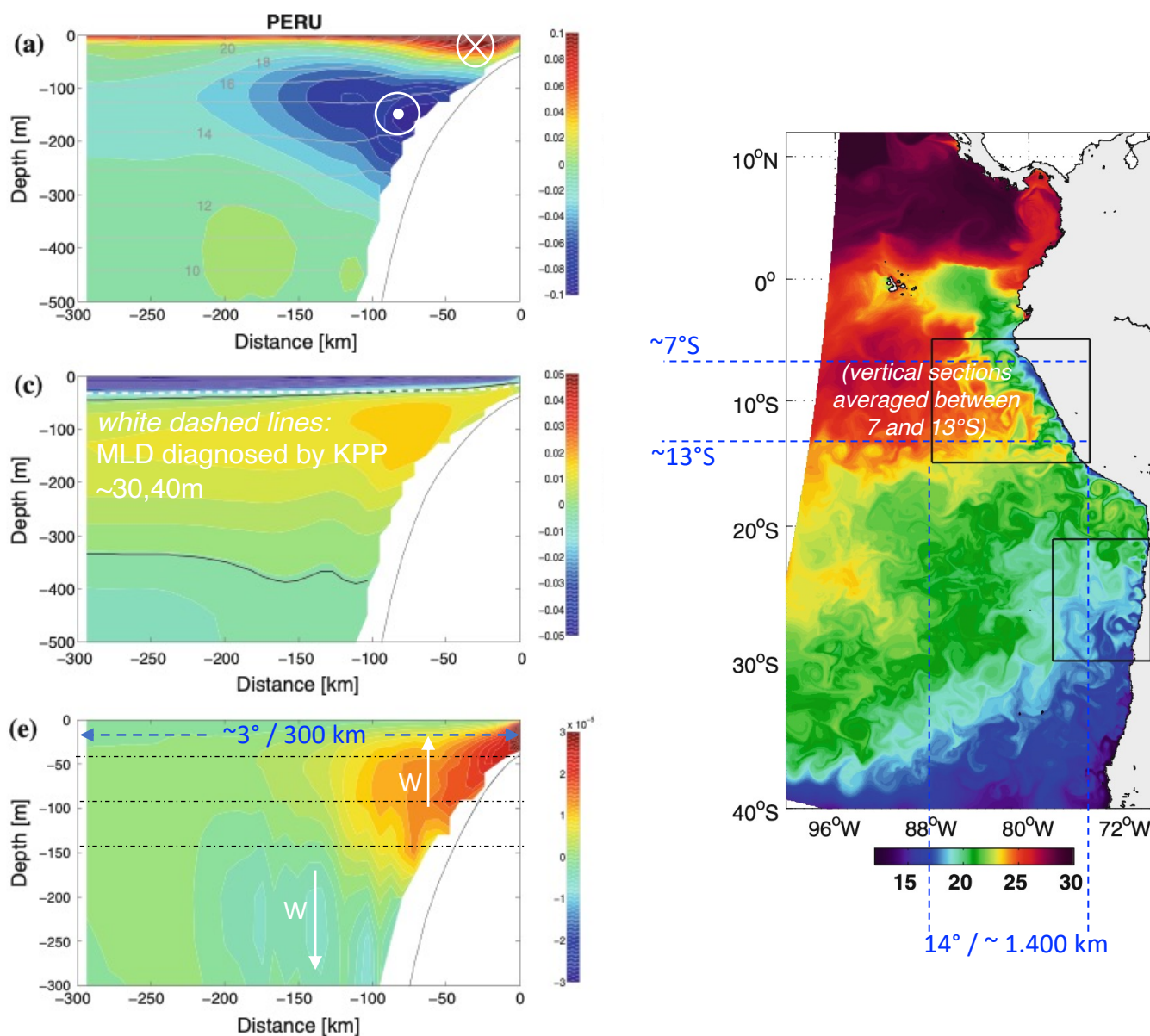


F. Colas et al.: Heat balance and eddies in the Peru-Chile current system



**Fig. 4** a, b Vertical sections of mean alongshore velocity  $\bar{v}$  ( $\text{m s}^{-1}$ ) from the SA-QCOW simulation for the Peru and Chile regions, averaged between 7 and 13°S (left) and between 22–28°S (right). Black contours represent the mean temperature with contour interval

1°C. c, d Vertical sections of the mean cross-shore velocity  $\bar{u}$  ( $\text{m s}^{-1}$ ). Black contours are  $\bar{u} = 0$ , and white dashed lines are the mixed-layer depth diagnosed by KPP. e, f Vertical sections of the mean vertical velocity  $\bar{w}$  ( $\text{m s}^{-1}$ )